

# MICHIGAN water works

WINTER 2025

NEWS

## THE REHABILITATION OF BATTLE CREEK'S VERONA WELLFIELD



2935 Buchanan Avenue SW, Suite 1C, Grand Rapids, MI 49548 | ADDRESS SERVICE REQUESTED

2025 JOINT EXPO &  
OPERATOR DAYS PREVIEW

2024 BEST TASTING  
WATER IN MICHIGAN

The official publication of the  
American Water Works Association  
 Michigan Section



# PRATT<sup>®</sup>

a **MUELLER** brand

120" Knife Gate Valve Supplied to GLWA



JGM Valve  
1155 Welch Road, Ste D  
Commerce, MI 48390

(248) 926-6200  
[www.jgmvalve.com](http://www.jgmvalve.com)  
[contact@jgmvalve.com](mailto:contact@jgmvalve.com)

# Celebrating 50 Years of Providing Professional Water Solutions



*At Peerless Midwest, we provide a comprehensive array of water supply services to municipalities and rural communities throughout the Midwest.*

*Founded in 1973, we opened our doors with 11 employees, a few pieces of equipment, and a belief that an unrelenting focus on providing high-quality customer service would bring us long-term success. Fifty years later, we're an employee-owned industry leader with over 100 water supply and repair professionals working out of 6 offices in 4 states.*

**Mishawaka, IN**  
**574.254.9050**

**Ionia, MI**  
**616.527.0050**

**[peerlessmidwest.com](http://peerlessmidwest.com)**

**Tipton, IN**  
**317.896.2987**

**Fenton, MI**  
**810.215.1295**

*As we look forward to the next 50 years, we're grateful for the special relationships we've enjoyed with the customers that helped make our success possible, and we welcome the opportunities ahead.*

## **Water Supply Services**

- Well Drilling
- Well & Pump Repair
- Water Treatment
- SCADA and Controls
- Hydrogeological Services
- Annual Performance Testing





## *Collaboration* at the Core of Exceptional Customer Service

The most successful projects are collaborations between customer and distributor. Let Core & Main serve as your partner in your next waterworks project, and see how successful a good collaboration can be. Local service, nationwide.

**Grand Rapids**  
1219 142nd Ave.  
616-222-9500

**Detroit North**  
6575 23 Mile Rd.  
586-323-8800

**Detroit West**  
4901 Dewitt Rd.  
734-398-5950

**Lansing (Holt)**  
1250 N. Cedar St.  
517-744-6752

**Local Experience, Nationwide®**

**coreandmain.com**

The Michigan Water Works News is a quarterly publication of the Michigan Section, American Water Works Association.

**The deadline for submitting articles for the Spring 2025 issue is January 24, 2025.**

Material may be submitted through the website at [www.mi-water.org/publications](http://www.mi-water.org/publications).

**BOARD OF TRUSTEES**

- |  |  |
|--|--|
| <p><b>Rick Solle</b><br/>Chair<br/>Plainfield Charter Township<br/>616-363-9660<br/><a href="mailto:soller@plainfieldmi.org">soller@plainfieldmi.org</a></p>                 | <p><b>Molly Maciejewski</b><br/>Chair-Elect<br/>City of Ann Arbor<br/>734-794-6426<br/><a href="mailto:mmaciejewski@a2gov.org">mmaciejewski@a2gov.org</a></p>                                |
| <p><b>Gary Wozniak</b><br/>Past Chair<br/>Lansing Board of Water &amp; Light<br/>517-702-6006<br/><a href="mailto:gary.wozniak@lbwl.com">gary.wozniak@lbwl.com</a></p>       | <p><b>Christine Spitzley</b><br/>Association Director<br/>OHM Advisors<br/>734-466-4517<br/><a href="mailto:christine.spitzley@ohm-advisors.com">christine.spitzley@ohm-advisors.com</a></p> |
| <p><b>Jaime Fleming</b><br/>Secretary/Treasurer<br/>City of Wyoming<br/>616-261-3572<br/><a href="mailto:jaime.fleming@wyomingmi.gov">jaime.fleming@wyomingmi.gov</a></p>    | <p><b>James Cassel</b><br/>Trustee<br/>EJ<br/>248-240-0515<br/><a href="mailto:james.cassel@ejco.com">james.cassel@ejco.com</a></p>  |
| <p><b>Angie Goodman</b><br/>Trustee<br/>Lansing Board of Water &amp; Light<br/>517-702-7059<br/><a href="mailto:angie.goodman@lbwl.com">angie.goodman@lbwl.com</a></p>       | <p><b>Doug Scott</b><br/>Trustee<br/>Rowe Professional Services<br/>810-341-7500<br/><a href="mailto:dscott@rowe.psc.com">dscott@rowe.psc.com</a></p>  |
| <p><b>LaShone Bedford</b><br/>Trustee<br/>Great Lakes Water Authority<br/>313-926-8106<br/><a href="mailto:lashone.bedford@glwater.org">lashone.bedford@glwater.org</a></p>  | <p><b>Dan Sroka</b><br/>Trustee<br/>Trace Laboratories<br/>231-215-4561<br/><a href="mailto:dsroka@trace-labs.com">dsroka@trace-labs.com</a></p>   |
| <p><b>Alando Chappell</b><br/>Trustee<br/>City of East Lansing<br/>517-319-6928<br/><a href="mailto:achappell@cityofeastlansing.com">achappell@cityofeastlansing.com</a></p> |  |

**MI-AWWA STAFF**

- 517-292-2912  
[info@mi-water.org](mailto:info@mi-water.org), [www.mi-water.org](http://www.mi-water.org)
- |  |  |
|--|--|
| <p><b>Jonelle Moore</b><br/>Interim Executive Director</p> | <p><b>Stacey Kukkonen</b><br/>Communications Coordinator</p> |
| <p><b>Rebecca Chesnut, CMP</b><br/>Events Manager</p>      | <p><b>Chris Willemis</b><br/>Database Administrator</p>      |

**Michigan Water Works News is published for the MI-AWWA by**

Craig Kelman & Associates Ltd.  
3rd Floor - 2020 Portage Avenue  
Winnipeg, MB • R3J 0K4  
Tel: 866-985-9780 Fax: 866-985-9799

©2025 Michigan Section, AWWA. All rights reserved. The contents of this publication, which does not necessarily reflect the opinion of the publisher or the association, may not be reproduced by any means, in whole or in part, without the prior written consent of the Michigan Section, American Water Works Association.



[www.kelmanonline.com](http://www.kelmanonline.com)

**Managing Editor:** Jenna Conrad  
**Design/Layout:** Kiersten Drysdale  
**Marketing Manager:** Al Whalen  
**Advertising Coordinator:** Sabrina Simmonds



# contents

WINTER 2025



## FEATURES

2025 JOINT EXPO & OPERATOR DAYS PREVIEW	<b>17</b>
THE REHABILITATION OF BATTLE CREEK'S VERONA WELLFIELD	<b>25</b>

## DEPARTMENTS

Editor's Note .....	<b>7</b>
Chair's Message .....	<b>10</b>
Director's Report.....	<b>12</b>
Executive Director's Message.....	<b>14</b>
What Every Operator Must Know .....	<b>33</b>
Above the Bridge.....	<b>34</b>
News & Notes.....	<b>36</b>
Volunteer News.....	<b>44</b>
Member Update .....	<b>47</b>
EGLE News .....	<b>50</b>
Training.....	<b>54</b>
Professional Directory .....	<b>57</b>
Advertiser Product and Service Center .....	<b>58</b>



# Think Twice Before Digging

## Our Services

- ◆ CIP Spot Lining
- ◆ CIP Lateral Lining
- ◆ Robotic Cutting
- ◆ Manhole Rehabilitation
- ◆ Sewer Cleaning
- ◆ PACP Pipeline Video Inspection
- ◆ LACP Lateral Inspection
- ◆ MACP Panoramo Manhole Inspection
- ◆ GIS Integration
- ◆ Unmatched 24-Hour Emergency Response



616.877.3930 ◆ [plummersenv.com](http://plummersenv.com)

NASSCO



# ALTERNATIVE LINING TECHNOLOGIES

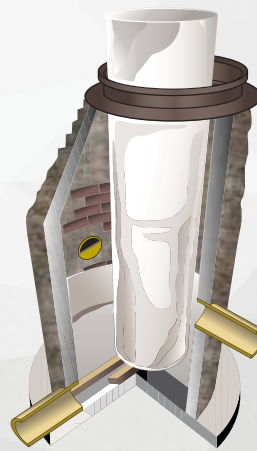
616-583-7100

[altliner.com](http://altliner.com)

[info@altliner.com](mailto:info@altliner.com)

## MAKE MANHOLES GREAT AGAIN

## Cured-In-Place Manhole Lining



### The AltLiner™ CIPM™



# ADVENTURES OF THE EDITOR

Kelly Gleason, Editor

**H**appy New Year! I hope you had a wonderful holiday season. Welcome to the winter issue of *Water Works News*, where the water adventures continue.

Since our last issue, fall was just beginning, and new leadership was taking their places (see page 47 for our current leadership group). October is my favorite month. It's filled with crisp air, colorful leaves, pumpkins, apple cider, and football. My water adventure took me across the Mighty Mac. Every year in the fall, I head north to see the changing leaves in shades of red, orange, and yellow. This year, in my travels, I walked the trail to the upper Tahquamenon Falls



and later took a drive down Whitefish Bay Scenic Byway, capturing some memories of still life at the Falls and Lake Superior shoreline.



In true Michigan fashion, we experienced decent weather late into November, and my water adventure continued. I had the opportunity to walk



**"THIS YEAR, IN MY TRAVELS, I WALKED THE TRAIL TO THE UPPER TAHQUAMENON FALLS AND LATER TOOK A DRIVE DOWN WHITEFISH BAY SCENIC BYWAY, CAPTURING SOME MEMORIES OF STILL LIFE AT THE FALLS AND LAKE SUPERIOR SHORELINE."**



**INDURON**  
PROTECTIVE COATINGS

**REVOLUTIONARY CERAMIC EPOXIES**

*Fast Drying. Self-Healing. Easy to Apply.*

**ROB BURCKLEY**  
REGIONAL SALES MANAGER  
502-655-7397  
RBURCKLEY@INDURON.COM

SCAN ME

the flume and assist in checking some outfall discharges on the Grand River here in Lansing near Moores Park Dam. I must admit, I was apprehensive about the floating concrete walkway, but it was sturdy. It was a great learning experience. The Section has several training opportunities to choose from, check out the calendar on page 54 for options.

Getting into the spirit of the holidays, I attended a craft show in Lowell, Michigan. I learned this is where King Milling Company sits on the Flat River. I didn't get a great photo of the mill, but the river sure was beautiful.

I'll continue to share my water adventures. Please send me your adventures. Submit pictures, stories, and updates through the Section website. 💧



**Publishing Schedule:**

**Spring 2025:**

Copy due to Editor January 24, 2025 – Published March.

**Summer 2025:**

Copy due to Editor May 2, 2025 – Published July.



**AECOM**

Water. make your **mark.**

We're hiring for all water disciplines  
Find your **H<sub>2</sub>O**pportunity



[aecom.com/h2opportunity](https://aecom.com/h2opportunity)

**SEWER CRAWLER**

**TRUGRIT TRACTION**

**PARTS & MANHOLE TOOLS**



**GRITTED WHEELS  
GRITTED TRACKS  
FIBERGLASS POLES  
PIGTAILS & MOTOR CABLES  
JETCAMS & MORE...**



WE RESURFACE WORN STEEL WHEELS  
WITH **NEW GRIT**

[www.trugrittraction.com](http://www.trugrittraction.com)  
407-900-1091

 **USA MADE**

**HAWKINS** **Water and Wastewater Treatment Chemicals and Equipment**

- ✓ Mini bulk delivery
- ✓ Tailored treatment programs designed specifically for your facility
- ✓ Large selection of equipment: pumps, tanks **and so much more**

**Call Today!**  
**LOCAL SERVICE: 877.355.7876**

[www.hawkinsinc.com](http://www.hawkinsinc.com) • [wtg@hawkinsinc.com](mailto:wtg@hawkinsinc.com)

**Hawkins products:**

- Phosphorus removal
- Corrosion control
- Zebra mussel control
- Bioaugmentation, biological controls
- Aqua Hawk settling aids
- Aqua Hawk dewatering polymers
- Disinfection chemicals
- Odor control chemicals
- Dechlorination chemicals
- TSS (Total Suspended Solids) control
- Lagoon sludge reduction
- Antifoams
- and so much more







# RESILIENCE THROUGH COMMUNITY: PREPARING FOR NATURE'S CHALLENGES

Rick Solle, Chair

**A**s I write this article, it is an unseasonably warm 78° outside, and it won't be that warm when this is published. That is how our seasons go here in Michigan, which is part of what makes our state so great. The winter gives way to blossoms and green leaves. The heat of the summer cools into the colors of fall with shorter days and the hope of seeing the sun again in a few months. That is how it goes year after year. But what happens when a weather pattern is out of the ordinary? A warm spell and heavy rain in the early spring turn into heavy runoff over frozen ground, causing floods. Or a hot, humid summer day fuels heavy storms with tornadoes that cause widespread power outages or, worse, destroy property. These are the scenarios that you prepare for but hope you never have to deal with them. That said, when

**“ OUR NETWORK STARTS WITH GETTING INVOLVED IN AWWA. BY BEING INVOLVED AND ENGAGED, YOU PUT DOWN THE DEPOSIT FOR FUTURE ASSISTANCE YOU WILL INEVITABLY NEED.”**

disasters happen, and they inevitably will, that is when utilities work together best to restore services as quickly as possible.

You see this most visibly with power companies. After a storm takes out power in a large area, crews from across the state hit the highways and make their way in to help restore power as quickly as possible. They have an excellent network setup that allows this to happen quickly and efficiently.

While water systems may not need help as often as power companies, we also have a great network that comes together when needed. Our network

starts with getting involved in AWWA. By being involved and engaged, you put down the deposit for future assistance you will inevitably need. Whether it is a late-night water main break on an odd-sized main and the only repair clamp available is in your neighbors' inventory, or a water tower is taken out during a tornado, you get to know the people you can call through the network that is the MI-AWWA.

While it is hard to imagine the worst-case scenario ever happening, just look at western North Carolina and eastern Tennessee, where Hurricane Helene dumped tremendous water in September, causing massive flooding that took out portions of many water systems. As of November, there are still systems that are not entirely back online and are under boil water alerts. They've never seen flooding like that before, and I imagine none of those water system operators thought that much destruction was possible. But they have come together and helped their neighbors where they could, and hopefully, all will be back to normal operation soon.

So, what's your worst-case scenario? Who are you going to call for assistance when the time comes? Get to know your water system community by attending our training seminars and conferences or volunteering for a council or committee. However you choose to get involved, do it now so that you can be prepared when (not if) the worst-case becomes your reality. 💧

**DIXON ENGINEERING, INC.**  
Engineering and Inspection Services  
SINCE 1981

**INSPECTION SERVICES**  
New Tank Construction Inspections  
Dry and ROV Inspections  
Annual Security Inspections  
Coating Inspections  
Warranty Inspections  
Welding/Repair Inspections

**ENGINEERING SERVICES**  
Long Term Maintenance Contracts  
Antenna Design, Review, & Inspection  
Tank Coating/Structural Repair Specifications  
Coating System Failure Analysis  
Treatment Plant Coating Specifications

Visit our website at [www.dixonengineering.net](http://www.dixonengineering.net)  
for more information about these and our other services.

**(800) 327 - 1578**



## OUR SERVICES

## MICHIGAN'S #1 STOP FOR SCADA



### ALWAYS ON™

You need a partner who understands that anything can happen at any time. With the UIS AlwaysOn™ approach, each new client is introduced to a UIS support team that will meet your needs- complete with their 24/7 contact information - to provide 24/7/365 support



### SCADA

- SCADA System Integrator
- SCADA Servers, CRUiSE Hosted & On-site
- HMI, RTU & PLC Programming
- Mobile SCADA on Smart Phones, Tablets, and computers
- Telemetry, Radio, Cell, Cable, DSL, Fiber Optic, & Satellite
- Radio Propagation Studies and Optimization



### INSTRUMENT CALIBRATIONS

- Accredited to ISO: IEC 17025:2005 Standard
- ISA and EPRI Trained Calibration Techs
- Delivers Precise, Accurate, and Repeatable results



### ROUTINE ELECTRICAL MAINTENANCE

- Telemetry Maintenance
- Pump Station Electrical Maintenance
- Switchgear, Transformers, Relays, and Breakers

 [www.teamuis.com](http://www.teamuis.com)

 1-866-967-9464





# CHARTING A SUSTAINABLE FUTURE: INNOVATIONS IN WATER STEWARDSHIP

Christine Spitzley, Director

## MI-AWWA Completes 2025 Business Plan

The Michigan Section of the American Water Works Association (MI-AWWA) has finalized its 2025 Business Plan, marking a significant milestone for the organization. This plan, set to be presented for approval at the MI-AWWA Board's January 2025 meeting, follows the adoption of the updated 2024-2029 Strategic Plan in July. Together, these documents provide a clear roadmap for MI-AWWA's future and advance its mission to support the water industry in Michigan.

## A Collaborative Effort

The completion of the 2025 Business Plan represents months of thoughtful collaboration among MI-AWWA Board

members, staff, and key stakeholders. It aligns strategically with the goals outlined in the 2024-2029 Strategic Plan, which emphasizes innovation, sustainability, and community engagement in Michigan's water sector.

## A Roadmap for Success

Designed as a tactical guide, the 2025 Business Plan provides a framework for MI-AWWA's day-to-day operations, focusing on specific, measurable goals. It ensures that every initiative supports outcomes that create tangible value for both members and the communities they serve.

A key feature of the plan is its focus on measurable metrics. These will track progress in areas such as public engagement, advocacy, infrastructure resilience, workforce development, innovation, and financial sustainability. By using data-driven metrics, MI-AWWA can adjust its strategies as needed to stay aligned with its long-term vision.

## Acknowledging the Contributions of the Board and Staff

The 2025 Business Plan would not have been possible without the dedication and expertise of MI-AWWA's Board members and staff. Their commitment to improving Michigan's waterworks industry is evident in the final plan, which reflects strong leadership and operational insight.

MI-AWWA Chair Rick Solle reflected on the importance of planning: "A good business plan is not just a roadmap for where you want to go; it's a tool to help you get there. Our 2025 plan is a blueprint for action, designed to deliver meaningful results for our members and the communities they serve."

## Looking Ahead

With the 2025 Business Plan and the 2024-2029 Strategic Plan as guiding documents, MI-AWWA is prepared to tackle the water industry's evolving challenges. With clear priorities, measurable goals, and a solid foundation of leadership, the Section is poised to make a lasting impact on Michigan's water future.

MI-AWWA looks forward to continuing this important work and invites all members to stay engaged as the Section advances its mission to improve lives through the stewardship of water. 💧

**STRUCTURE. & INTEGRITY.**

**PITTSBURGH TANK & TOWER GROUP**  
An ESOP Company Since 1919  
"100 years and still climbing"





**WWW.PTTG.COM**

**INSPECTIONS REPAIR TANKS**

**NEW TANKS**  
(270) 826-9000 ext. 2601  
**EXISTING TANKS**  
(270) 826-9000 ext. 4601



### KB Series Biogas CHP Modules



Twin KB 100 Biogas CHP Modules Pictured above

Kraft Energy Systems **KB Series** Biogas Fueled CHP Modules put waste to work. Wastewater treatment facilities, dairy farms, dairy food producers and landfill sites rely on KB Series CHP Modules for environmental solutions that pay back.

Your choice of 7 pre-engineered indoor/outdoor models rated ( 60 - 550 kWe ) with packaged hot water recovery system or straight electrical power generation. Custom single unit solutions available up to 1.3MW or larger with multiple units in parallel.

Kraft Energy Systems CHP modules are sold and serviced by Kraft Power Corporation. Since 1965, Kraft has been a leader in servicing CHP systems as well as critical life safety and emergency power systems. With 7 full service locations, providing 24x7 response, Kraft is a power systems expert, who understands the urgency of keeping power generation assets on line.

Contact Kraft Energy Systems today to learn more  
**877-349-4184**

[CHP@kraftpower.com](mailto:CHP@kraftpower.com)

[www.kraftenergysystems.com](http://www.kraftenergysystems.com)



# Discover a Solution

*Experience Haviland*



**Haviland provides efficient, cost-effective solutions to achieve today's water treatment standards.** Discover a full range of wastewater treatment chemistries including coagulants, clarification and thickening polymers, pH/alkalinity adjustment chemistries, along with a full line of defoaming agents.



[chemicalexperts@Havilandusa.com](mailto:chemicalexperts@Havilandusa.com)  
[HavilandUSA.com](http://HavilandUSA.com) | 800.456.1134





# A COMMITMENT TO SAFEGUARDING MICHIGAN'S WATER

Jonelle Moore, Interim Executive Director

## Finding Fulfillment in Water Work: Water Professionals and Operators and The Impact Through Their Careers and Volunteer Work

In a world where water is one of our most precious resources, the roles of water industry professionals are critical to maintaining safe and sustainable water systems. For those just beginning their careers in this field, the journey often comes with a deep sense of purpose and personal fulfillment. New professionals discover that working in water isn't just a job; it's a calling that provides the unique

opportunity to serve communities and make a tangible difference.

## The Appeal of a Career in Water

The water industry is a unique field where science, engineering, and public service intersect. Water operators play a hands-on role in protecting public health and ensuring safe drinking water, from testing contaminants to maintaining critical infrastructure. This career offers stability, growth, and the chance to make a lasting impact, as skilled professionals are increasingly essential to meeting the

challenges of climate change and aging infrastructure. Being part of this field promises both a rewarding career and a meaningful legacy.

## Volunteering: Adding a Layer of Connection

We invite professionals like you to join the growing community of volunteers at the Michigan Section of the American Water Works Association (MI-AWWA). Volunteering with us offers a chance to connect with mentors, broaden your professional network, and make a meaningful impact in communities across Michigan. By giving your time, you'll not only advance your career but also contribute to ensuring safe and reliable water for all.

Volunteers can raise awareness about water issues, promote conservation, and educate the public about the vital role of water operators by participating in events, educational programs, and outreach efforts. Volunteering provides a broader perspective on the industry and often deepens commitment to professional roles.

## A Sense of Belonging and Community

At MI-AWWA, we offer a welcoming, close-knit community where professionals can count on strong support from experienced colleagues and mentors. Join us and discover the benefits of a network dedicated to helping you grow and succeed in the water industry. Whether troubleshooting a system challenge or discussing career goals, having a network of experienced professionals to turn to makes a significant difference. Events like workshops, conferences, and volunteer initiatives offer valuable spaces for networking and skill-sharing, fostering a strong sense of camaraderie among professionals of all experience levels.

Proudly providing **Fluidthinking**<sup>®</sup> to Michigan communities for over 97 years.

water  
wastewater  
stormwater  
support services

**Jones & Henry Engineers**

269-353-9650 / Campus Drive Kalamazoo, MI

**Finding Purpose and Passion**

At MI-AWWA, we understand the deep sense of purpose that comes with a career in water. Here, you're not just 'keeping the water running' – you're actively protecting the health and safety of families, schools, and businesses. This meaningful work offers a unique sense of fulfillment and motivation, knowing that every effort contributes to something bigger than yourself. Join our community and experience a purpose-driven career that energizes and inspires, even through the toughest challenges.

**The Impact of Mentorship in the Water Industry**

Mentorship in the water industry is essential for fostering skilled professionals and resilient communities. Experienced mentors offer invaluable guidance, sharing technical expertise and industry insights that accelerate skill development and instill confidence in newcomers. This relationship not only helps new professionals navigate

**“BECOMING AN MI-AWWA MEMBER ISN'T JUST A CAREER MOVE; IT'S A COMMITMENT TO SAFEGUARDING MICHIGAN'S WATER FUTURE AND MAKING A MEANINGFUL IMPACT IN YOUR FIELD.”**

challenges but also builds a sense of belonging in a complex, highly regulated field. For mentors, it's a chance to shape the future of water stewardship, passing down knowledge while gaining fresh perspectives. Together, mentors and mentees help ensure a well-prepared workforce dedicated to safeguarding our water systems for generations to come.

**The Benefits of Being a Member of MI-AWWA**

Joining the Michigan Section of the American Water Works Association (MI-AWWA) connects you to a dynamic community of water professionals dedicated to advancing safe, sustainable water systems across the state. As a

member, you can access numerous resources, including cutting-edge industry research, technical training, and development opportunities that keep your skills sharp and knowledge current.

Membership also opens doors to valuable networking with peers and industry leaders, fostering connections that can lead to career growth and mentorship. Through conferences, workshops, and special events, you'll be part of a professional network that actively collaborates to address Michigan's unique water challenges. Additionally, MI-AWWA members have opportunities to give back, contributing to essential initiatives that protect public health and support water-related education in local communities. 💧



**CALL US TODAY!**  
1-800-433-4332

3285 LAPEER RD. WEST, AUBURN HILLS, MI 48326

- ✓ Badger Meters & Reading Systems
- ✓ Stocking Distributor of Water Distribution Products
- ✓ Meter Installation & Field Services
- ✓ Water Quality Products
- ✓ Pressure and Leak Monitoring

**WATER QUALITY ANALYZERS**

**SMART WATER IS BADGER METER**



**FOR ALL YOUR WATER, STORM AND SEWER NEEDS**

**SAGINAW**

(989) 752-7911

Saginaw@michiganpipe.com

**GENESEE**

(810) 547-7154

Genesee@michiganpipe.com

**JACKSON**

(517) 764-9151

Jackson@michiganpipe.com

**GRAND RAPIDS**

(616) 805-3206

GrandRapids@michiganpipe.com

**TRAVERSE CITY**

(231) 929-7473

TraverseCity@michiganpipe.com

**HOLLAND**

(616) 376-8636

Holland@michiganpipe.com

**MT. PLEASANT**

(989) 817-4331

MtPleasant@michiganpipe.com

**GAYLORD**

(989) 889-6682

Gaylord@michiganpipe.com

[www.michiganpipe.com](http://www.michiganpipe.com)

**8 LOCATIONS TO SERVE YOU!**



The premier water and wastewater conference in the Midwest.



# JOINT EXPO

## & OPERATOR DAYS

**February 4-5, 2025 | Lansing Center, Lansing, MI**



**Join water and wastewater professionals from across Michigan for the 2025 Joint Expo & Operator Days!**

The annual Joint Expo & Operator Days, a collaborative effort by the Michigan Water Environment Association (MWEA) and the Michigan – American Water Works Association (MI-AWWA), is the ultimate gathering for water and wastewater operators in the state. It's a vibrant, high-energy experience, and operators who attend can discover the latest innovations, share best practices, and engage with industry leaders, all while ensuring the delivery of pristine drinking water and top-notch wastewater treatment across Michigan.

Don't miss the opportunity to supercharge your skills and network with fellow operators at this event!

Register today to attend the premier conference in the Midwest! For more information, please visit [www.jointexpo.org](http://www.jointexpo.org).



**CO-PRESENTED BY:**



# Join water and wastewater professionals from across Michigan for the **2025 Joint Expo & Operator Days!**

**February 4-5, 2025 | Lansing Center in Lansing, MI**

## Schedule at a Glance

### Tuesday, February 4

REGISTRATION/CHECK-IN WINDOWS OPEN AT 7:00 AM BOTH DAYS

TECHNICAL SESSION	MANAGERIAL SESSION
<b>7:45 am – Welcome &amp; Overview</b> Updates from MI-AWWA and MWEA Representatives	<b>8:15 am – Welcome &amp; Overview</b> Updates from MI-AWWA and MWEA Representatives
<b>8:00 am – Overview of EGLE Operator Training and Certification Programs</b> Koren Carpenter, EGLE Alyssa Sarver, EGLE	<b>8:30am – Exploring the West Michigan Water Career Program Through the Interns’ Lens</b> Hillary Caron-Karbowski, City of Grand Rapids
<b>8:45 am – Battle Creek Case Study and Next Level Asset Management: Subverting the Disaster You’ve Never Considered</b> Perry Hart, City of Battle Creek Aaron Davenport, Jones & Henry Engineers	<b>9:30 am – Legislative Landscape Update: Key Changes Impacting Water Utilities</b> Mike Compagnoni, Midwest Strategy Group
<b>9:30 am – (15) Minute Break</b>	<b>10:00 am – (15) Minute Break</b>
<b>9:45 am – Best Practices in Design and Maintenance of Grating for Water Utilities</b> TJ Bates, Donohue	<b>10:15 am – Developing Effective Utility Leaders &amp; Managers</b> Wayne Pratt, Xylem
<b>10:15 am – Sources of Microplastics to WTPs/WWTPs: Management and Treatment</b> Mala Hettiarachchi, Environmental Resources Group	<b>10:45 am – Unveiling The Science of Polymer Activation: Exploring The Benefits Through Applications</b> Pat Gallagher, Cleanwater1
<b>10:45 am – What is in Your Spec? A Plainfield Township Case Study</b> Matt Weldon, City of Plainfield Township	<b>11:15 am – Emergency Preparedness: Building Resilience in Water and Wastewater Operations</b> Allison Farole, City of Grand Rapids
<b>11:15 am – ADJOURN TO EXPO HALL</b>	<b>11:45 am – ADJOURN TO EXPO HALL</b>
<b>POKER RUN BEGINS   LUNCH BUFFET AVAILABLE UNTIL 2 PM (TICKET REQUIRED)   EXPO HALL OPEN TO 4 PM</b>	

### Wednesday, February 5

REGISTRATION/CHECK-IN WINDOWS OPEN AT 7:00 AM BOTH DAYS

TECHNICAL SESSION	MANAGERIAL SESSION
<b>7:45 am – Welcome &amp; Overview</b> Updates from MI-AWWA and MWEA Representatives	<b>8:15 am – Welcome &amp; Overview</b> Updates from MI-AWWA and MWEA Representatives
<b>8:00 am – EGLE Updates: Lead, Copper, Emerging Contaminants, and More</b> Heather Brown, EGLE Katie Stroh, EGLE Carla Davidson, EGLE	<b>8:30 am – Intercultural Communication (Three-Hour Workshop)</b> Sally Duffy, Hubbell, Roth & Clark Joseph Callahan, City of East Lansing
<b>8:45 am – Safety Redefined: Tomorrow’s Culture Starts Today</b> Mary Koeger, Oakland County Water Resources Commission	
<b>9:30 am – (15) Minute Break</b>	<b>10:00 am – (15) Minute Break</b>
<b>9:45 am – Leveraging GIS for Advanced Asset Management in Water and Wastewater Systems</b> Mike Levandoski, Zeeland	<b>10:15 am – Workshop Continues</b>
<b>10:15 am – Best Practices in Rigging: Ensuring Reliable and Secure Lifting Operations for Water Utilities</b> Nick Karsiotis, Great Lakes Water Authority	
<b>10:45 am – Vibrational Analysis</b> Travis Stricklin, Torishima Service Solutions of MI Daniel Fuentes, Torishima Services Solutions of MI	
<b>11:15 am – ADJOURN TO EXPO HALL</b>	<b>11:45 am – ADJOURN TO EXPO HALL</b>
<b>SCAVENGER HUNT BEGINS   LUNCH BUFFET AVAILABLE UNTIL 2 PM (TICKET REQUIRED)   EXPO HALL OPEN TO 2 PM</b>	

## Operator Days

There will be two different tracks both Tuesday and Wednesday. One track focused on TECHNICAL, the other on MANAGERIAL topics.

Training registration includes your selected training session, timed lunch ticket, and entry to the exhibit hall.

*Approved for up to 0.6 CECs in both drinking water and wastewater if attending both days – 0.3 CECs per day.*



# JOINT EXPO & OPERATOR DAYS



## Explore the Exhibit Hall Only – No Training Required!

Not attending the trainings? No problem! You can still explore the Exhibit Hall and connect with over 150 exhibitors showcasing the latest innovations in water and wastewater management from across the Midwest. Pre-register online for free access, or register on-site for just \$10. Hall passes will be complimentary until February 4. Don't miss this opportunity to see the best the industry has to offer! *Approved for up to 0.2 CECs in both drinking water and wastewater.*

## Engage and Win Big at the Joint Expo Exhibit Hall!

Join us on February 4 and 5 for some interactive fun while you explore the Exhibit Hall!

### Poker Run – Tuesday, February 4

Kick off your day by grabbing a Poker Run sheet at registration! Visit participating vendors, learn about their products and services, and draw a playing card at each stop. The more vendors you visit, the better your chances of building a winning poker hand! Submit your completed sheets by 3:30 pm for a chance to win exciting prizes.

### Exhibitor Scavenger Hunt – Wednesday, February 5

The fun continues on Wednesday with our Scavenger Hunt. Pick up your list of clues at registration and hunt for specific items or information at exhibitor booths. It's a great way to discover unique offerings and connect with vendors. Winners will be announced at 1:30 pm with fantastic prizes donated by our generous exhibitors.

Don't miss out on these great opportunities to network, learn, and win! We can't wait to see you at the Joint Expo and Operator Days!

### Joint Expo Mixer

Tuesday attendees can join us for happy hour at the Lansing Brewing Company from 4:15 pm to 6:15 pm on Tuesday, February 4, 2025. Enjoy a drink, some nibbles, and more networking with colleagues and exhibitors.

### Careers Round Table

Tuesday attendees can join us for a careers round table discussion on Tuesday, February 4, 2025.

### Do You Know a Student Interested in the Water Sector?

**Discover a Career in the Water Sector!** Students (high school and college) are invited to an inspiring day at the Midwest's premier water and wastewater conference: **Joint Expo and Operator Days on Tuesday, February 4, 2025**, starting at **10 am** in Lansing, MI.

**Why explore the water industry?** Behind every drop of clean water lies a world of career possibilities – art, media, sales, engineering, chemistry, legislation, research, and more. Whatever your passion, the water sector has a place for you to shape the future!

**Connect with Experts:** Meet professionals and learn about exciting careers in the water industry. **Lunch with Leaders:** Enjoy lunch with water supervisors who will share their stories and answer your questions. **Tailored Guided Tour:** Take a personalized tour of the expo floor to discover the latest technology and innovations in water and wastewater management.

**Registration is FREE, and lunch is included!** Help a student take their first step toward a rewarding and impactful career in the water sector. For more information and to register, scan the QR code.



### Registration

REGISTRATION TYPE	UP TO JANUARY 31, 2025	AFTER JANUARY 31, 2025
<b>1-Day Conference Attendee</b> Includes your selected training session, lunch, and entry to the exhibit hall on the day you select only.	\$160	\$175
<b>2-Day Conference Attendee</b> Includes your selected training session, lunch, and entry to the exhibit hall on both days.	\$300	\$330
<b>Exhibit Hall Pass Only</b> Includes entry to the exhibit hall only on both days.	Complimentary	\$10

Register at [www.jointexpo.org](http://www.jointexpo.org).

## Advanced Rehabilitation Technology



Alex Lantz  
525 Winzeler Drive, Unit 1  
Bryan, OH 43506  
419-799-1308  
alex@artcoatingtech.com  
www.artcoatingtech.com

Advanced Rehabilitation Technology specializes in maintaining and rehabilitating municipal and industrial water and wastewater systems. ART can provide extensive products and services designed specifically for water and wastewater structure rehabilitation, including CCTV inspection/cleaning and Polyurea Linings.

**Advanced Valve Technologies**  
**AIS Construction Equipment**  
**Alexander Chemical**  
**Allied Instrumentation**  
**Alternative Lining Technologies**  
**American Cast Iron Pipe**  
**Aquablok**  
**Aquatic Informatics**  
**Batco**  
**Belden-Hutter Inc.**  
**Best Equipment Co.**

## Bluewater Tanks and Covers



Mike Polsin  
2000 Town Center, Suite 1900  
Southfield, MI 48075  
810-429-0649  
info@bluewaterstoragesystems.com  
www.bluewaterstoragesystems.com

Bluewater Engineered Storage Systems specializes in designing, supplying, and installing liquid storage solutions. We offer a comprehensive range of engineered tanks for municipal and industrial applications, including potable water, wastewater, and fire protection. Our turnkey services ensure reliable, customized storage systems tailored to meet your unique needs.

**Bolhouse LLC/Pyure**  
**C&S Solutions Inc.**  
**C2AE**  
**Carlson-Diamond & Wright Inc.**  
**CB&I Storage Tank Solutions LLC**  
**CGS Safety Inc.**  
**Clear Heights Construction**  
**ClearFlow LLC**

## Commerce Controls Inc.



Eric Hine  
41069 Vincenti Court  
Novi, MI 48375  
248-476-1442  
ehine@commercecontrols.com  
www.commercecontrols.com

Founded in 1977, Commerce Controls Inc. has earned a reputation for excellence as a "Turn-Key Control Systems Integrator." We provide services and solutions supporting various industries and applications throughout North America. Embracing technology, market strength, experience, quality and integrity, Commerce Controls is committed to delivering our clients industry-leading solutions at an exceptional value.

## Core & Main



Tom Fisher  
4901 Dewitt  
Canton, MI 48188  
734-395-5950  
tom.fisher@coreandmain.com  
www.coreandmain.com

Core & Main was established in 2017 and built on the foundation of 100+ legacy companies. We're a leading specialized distributor of water, wastewater, storm drainage, fire protection products, and related services. These products are integral to building, repairing, and maintaining water and wastewater systems. Visit [www.coreandmain.com](http://www.coreandmain.com) to learn more.

## Culy Contracting Detroit Pump & Mfg. Co.

## Dixon Engineering Inc.



Tarin Minkel, EIT  
1104 Third Avenue  
Lake Odessa, MI 48849  
800-327-1578  
tarinminkel@dixonengineering.net  
www.dixonengineering.net

Dixon Engineering Inc. (DIXON) is a consulting engineering firm specializing in the evaluation and preparation of specifications and contract documents for the coating and rehabilitation of steel and concrete structures. We offer an extensive structural and coating inspection program specializing in water storage tanks.

**DLZ Michigan**  
**DN Tanks**  
**Dubois-Cooper Associates**  
**Duke's Root Control Inc.**  
**e-Tank**  
**Eganix Inc.**  
**EGLE – Lead and Copper Unit**  
**EGLE – Ops Cert**

## EJ



Joe Lazzati  
301 Spring Street, Unit C  
East Jordan, MI 49727  
800-626-4653  
joe.lazzati@ejco.com  
www.ejco.com

EJ is the leader in designing, manufacturing, and distributing access solutions for water, sewer, drainage, telecommunications, and utility networks worldwide. Products include manhole frames and covers, hinged access assemblies, drainage grates, valve boxes, and related products. Made in the USA.

## EJ Prescott Elhorn Engineering Company Environmental Sales

## ETNA Supply Company



Kendra Morris  
1090 36th Street SE  
Grand Rapids, MI 49508  
616-514-5263  
kcmorris@etnasupply.com  
www.etnasupply.com

ETNA Supply Company provides municipalities with many products, including Sensus smart utility solutions, pipe, brass, and fire hydrants. Our sales and customer service staff are trained to help cities and municipalities provide the underlying infrastructure required to support neighborhoods and advanced metering infrastructure.

## Fer-Pal Construction

## Ferguson Waterworks



Danny Myers  
725 Ionia Avenue SW  
Grand Rapids, MI 49503  
616-248-0605  
daniel.myers@ferguson.com  
www.ferguson.com

# JOINT EXPO & OPERATOR DAYS EXHIBITORS

## Fishbeck



**John Willemin, PE**  
 1515 Arboretum Drive SE  
 Grand Rapids, MI 49546  
 616-575-3824  
[jwillemin@fishbeck.com](mailto:jwillemin@fishbeck.com)  
[www.fishbeck.com](http://www.fishbeck.com)

Fishbeck is a versatile consulting firm offering infrastructure engineering, architectural/engineering, environmental, and construction services. Our integrated full-service approach delivers innovative designs tailored to the needs of our diverse clientele. Committed to exceptional service, technical quality, and long-term client relationships, our design specialists focus on creative, value-driven solutions.

## Fleis & VandenBrink



**Joe Benjamin**  
 2960 Lucerne Drive SE  
 Grand Rapids, MI 49546  
 616-977-1000  
[jbenjamin@fveng.com](mailto:jbenjamin@fveng.com)  
[www.fveng.com](http://www.fveng.com)

Fleis & VandenBrink (F&V) is a full-service engineering firm serving Michigan and Indiana since 1993. We provide award-winning design, collaborating with clients to create innovative projects. Along with F&V Operations and Resource Management (FVOP) and F&V Construction (FVC), we offer comprehensive "Design, Build, Operate" services across various communities.

## Flow Quip Solutions

### Force Flow/Halogen Valve Systems



**Christina Rumbel**  
 2430 Stanwell Drive  
 Concord, CA 94520  
 925-686-6700  
[christina@forceflow.com](mailto:christina@forceflow.com)  
[www.forceflowscales.com](http://www.forceflowscales.com)

Leading manufacture of chemical monitoring and control systems for chlorine, sodium hypochlorite, fluoride, polymer, and all other chemicals used in water and wastewater treatment. Weigh scales for cylinders, ton containers, drums, day tanks, and bulk storage tanks. Monitor level, usage, and feed rate.

**Ford Meter Box**  
**Fredrickson Supply LLC**  
**Frontline**  
**George Instrument**  
**Gilson Engineering Sales**  
**Hach**  
**Hamlett Environmental Technologies**

## Haviland USA



**Steven Buday**  
 421 Ann Street NW  
 Grand Rapids, MI 49504  
 800-456-1134  
[chemicalexperts@havilandusa.com](mailto:chemicalexperts@havilandusa.com)  
[www.havilandusa.com/products/wastewater-treatment](http://www.havilandusa.com/products/wastewater-treatment)

Proudly employee-owned and operated, Haviland Products Company delivers cost-effective, customizable chemical solutions to meet your water quality needs. Our dedicated technical team collaborates directly with customers, leveraging our expertise in specialty and commodity chemistry to ensure optimal performance and results.

**HESCO Group LLC**  
**HydroCorp**  
**HyFi**  
**I & C Sales North**  
**InfoSense**  
**Infrastructure Alternatives**  
**Infratech Solutions**  
**Jack Doherty Companies**  
**Jett Pump & Valve LLC**

## JGM Valve Corporation



**Joey Maruskin**  
 1155 Welch Road, Suite D  
 Commerce, MI 48390  
 248-926-6200  
[contact@jgmvalve.com](mailto:contact@jgmvalve.com)  
<https://jgmvalve.com>

Pumps, valves, actuators, blowers, belt filter press, centrifuge, and many other products.

## Jones & Henry



**Aaron J. Davenport PE**  
 4971 Campus Drive  
 Kalamazoo, MI 49008  
 269-353-9650  
[kalamazoo@jheng.com](mailto:kalamazoo@jheng.com)  
[www.jheng.com](http://www.jheng.com)

Jones & Henry Engineers offers a wide range of consulting engineering services with expertise in water resource and sanitary engineering – including wastewater and water treatment, stormwater, as well as related collections and distribution infrastructure work, allowing the firm to deliver solutions for various municipal needs. Being locally owned and operated, we take tremendous pride in utilizing our team's expertise to enhance the success of our region.

## Kennedy Industries



**Travis Cole**  
 4925 Holtz Drive  
 Wixom, MI 48393  
 248-684-1200  
[info@kennedyind.com](mailto:info@kennedyind.com)  
[www.kennedyind.com](http://www.kennedyind.com)

Kennedy Industries is among the best at providing pump, process, valve, control, and repair services, but what makes us so unique is our dedication to customer service at every step of the way. We appreciate your business and work tirelessly to be the single-source provider of premier equipment and services for your commercial, municipal, and industrial applications.

**Kerr Pump & Supply**  
**KSB Dubric**  
**L.D. Docsa Associates Inc.**  
**Lewis Sales**  
**Link Utility Technologies**  
**Lystek International Corp.**  
**M.E. Simpson Co. Inc.**  
**MacAllister Hydrovac Michigan CAT**  
**MacQueen**  
**MBA Distributing**  
**McDermott International Inc.**  
**McWane WaterWorks**  
**MDHHS**  
**Mersino**  
**Metron**

## Michigan Pipe & Valve



**Luke Fleischmann**  
 5500 - 36th Street SE  
 Grand Rapids, MI 49512  
 616-805-3206  
[luke.fleischmann@michiganpipe.com](mailto:luke.fleischmann@michiganpipe.com)  
<https://michiganpipe.com>

**Michigan Rural Water Association**  
**Michigan State Industries**

## Midwest Municipal Instrumentation



**Curtis Brzyski**  
 4391 Bonnymede Street  
 Jackson, MI 49201  
 517-764-4736  
[cbrzyskimmi@msn.com](mailto:cbrzyskimmi@msn.com)  
[www.midwestmunicipalinc.com](http://www.midwestmunicipalinc.com)

Process control instrumentation with flow, level temperature equipment.

**Monroe Environmental**  
**Motion Control Resources**  
**Mtech**  
**New Century Sales Inc.**  
**Northern Pump and Well**

# JOINT EXPO & OPERATOR DAYS EXHIBITORS



**NovaStar Solutions**  
**Oden Training**  
**OHM Advisors**  
**Omega Liner Company Inc.**

## Peerless-Midwest Inc.



Frank Williams  
 505 Apple Tree Drive  
 Ionia, MI 48846  
 616-527-0050  
[frank.williams@peerlessmidwest.com](mailto:frank.williams@peerlessmidwest.com)  
[www.peerlessmidwest.com](http://www.peerlessmidwest.com)

At Peerless Midwest, we provide comprehensive water supply services to municipalities and rural communities throughout Michigan. We are an employee-owned industry leader employing over 100 water supply and repair professionals in the Midwest.

**Perceptive Controls**  
**Peterson and Matz**

## Plummer's Environmental Services



Dave Van Dyken  
 10075 Sedroc Industrial Drive  
 Byron Center, MI 49315  
 616-877-3930  
[office@plummersenv.com](mailto:office@plummersenv.com)  
[www.plummersenv.com](http://www.plummersenv.com)

Plummer's Environmental Services has served the municipal sewer and water industry for over 30 years. We specialize in sewer cleaning, video inspection, hydro excavation, along with cured in place pipe lining, manhole lining and coating.

**Preload LLC**  
**Professional Pump**  
**Puris**  
**PVS Technologies**  
**RootX**  
**Rowe Professional Services Company**  
**RS Technical Services Inc.**  
**Saginaw Chippewa Indian Tribe**

## SAK Construction LLC



Christa Cope  
 864 Hoff Road  
 O'Fallon, MO 63366  
 636-385-1000  
[ccope@sakon.com](mailto:ccope@sakon.com)  
[www.sakon.com](http://www.sakon.com)

The right tools in the right hands — SAK delivers a depth of experience and a breadth of services to solve your most complex pipeline challenges. Whether renewing aging pipelines or expanding water and wastewater systems, we draw on the latest proven technologies to customize the right solution for your situation. Customers select SAK for our innovation and experience, then return time and time again because of our unmatched dependability.

## Septic Panels USA



Lee Riemenschneider  
 4623 West Range Road 1431  
 Kingsland, TX 78639  
 325-388-6023  
[lee@septicpanelsusa.com](mailto:lee@septicpanelsusa.com)  
<https://septicpanelsusa.com>

Our septic control panels have been ergonomically designed and expertly engineered for durability in any environment with users ranging from newbies to experienced pros; our products provide an intuitive user interface that can be installed quickly and maintained easily — glove-friendly! No more struggling against subpar technology; we ensure field technicians have what it takes to install, use, and service easily.

## Shat-R-Shield Lighting Inc.



Lexi Moore  
 116 Ryan Patrick Drive  
 Salisbury, NC 28147  
 704-216-2212  
[lmoore@shatrshield.com](mailto:lmoore@shatrshield.com)  
[www.shatrshield.com](http://www.shatrshield.com)

Shat-R-Shield Lighting Inc. pioneered the safety-coated lamp industry in the late 1970s and has become an expert leader in the specialty LED fixture industry. Products offered include fixtures for harsh and hazardous locations, correctional and behavioral applications, and other areas requiring vandal-resistant lighting. For more information about Shat-R-Shield Lighting, please visit [www.shatrshield.com](http://www.shatrshield.com).

**Silversmith Inc.**

## SLC Meter



Ryan Eichbrecht  
 3285 Lapeer Road W  
 Auburn Hills, MI 48326  
 248-403-9862  
[ryan@slcmeter.com](mailto:ryan@slcmeter.com)  
[www.slcmeterllc.com](http://www.slcmeterllc.com)

SLC Meter is your sole source distributor for Badger Meter in Michigan. Badger's Blue Edge suite of water distribution solutions includes the M-series mechanical and E-series solid state meters, Orion cellular reading systems, ATi and s:can water quality analyzers, all in the Beacon software suite. Other products include Ford Meter Box, A.Y. McDonald, Hymax, JCM, and Star Pipe.

**Smith-Blair/Xylem**  
**Solberg, Knowles & Associates**  
**Spalding DeDecker & Associates**  
**Spicer Group**

**SW Controls Inc.**  
**Systems Specialties**

## Taplin Group



David Balogh  
 5140 W Michigan Avenue  
 Kalamazoo, MI 49006  
 269-375-9595  
[davebalogh@taplinholdings.com](mailto:davebalogh@taplinholdings.com)  
[www.taplingroup.com](http://www.taplingroup.com)

Taplin is proud to be Michigan's premier environmental services contractor for more than 70 years. With experience and innovation, we bring solutions and value to solve even the toughest challenges for our clients. The right tools, the right experience, the right choice — Taplin Environmental Services.

**Team UIS**  
**Trace Analytical Laboratories**  
**Trenton Corporation**  
**Trumbull Manufacturing**  
**Underground Solutions**  
**United Rentals Fluid Solutions**  
**United Systems & Software**  
**USA Bluebook**  
**USALCO LLC**

## USG Water Solutions



Kobe Overton  
 1230 Peachtree Street NE, Suite 1100  
 Atlanta, GA 30309  
 470-893-5820  
[kobe.overton@usgwater.com](mailto:kobe.overton@usgwater.com)  
<https://usgwater.com>

**Utility Solutions Inc.**  
**Utility Technologies LLC**

## VEGA Americas



John Smith  
 3877 Mason Research Parkway  
 Mason, OH 45036  
 385-272-0161  
[jw.smith@vega.com](mailto:jw.smith@vega.com)  
[www.vega.com](http://www.vega.com)

VEGA is an experienced supplier of instrumentation for drinking water supply systems and sewage treatment plants. For decades already, VEGA has been supplying level and pressure sensors for containers, pipelines, filters, and reservoirs all over the world. VEGA instrumentation provides accurate measurement data as a basis for automatic control of the various process steps. All sensors are state-of-the-art, certified, and easy to install and operate.

**Velocity Pump & Controls**

# JOINT EXPO EXHIBITORS

— & OPERATOR DAYS —



**Wade Trim**



Vaughn Martin  
500 Griswold Street, Suite 2500  
Detroit, MI 48226  
800-482-2864  
vmartin@wadetrim.com  
www.wadetrim.com

Wade Trim is committed to maximizing the value of our clients' infrastructure investment. We've been solving complex engineering challenges for nearly a century to create stronger communities. Our work approach is customized to fit each client and project. We deliver solutions you can stand behind.

**Wagner Enterprise  
Water Works Metrology LLC**

**Watertap Inc.**



Linda Carpani  
48595 West Road  
Wixom, MI 48393  
248-437-7023  
linda@watertapinc.com  
www.watertapinc.com

Pipeline specialists that work closely with municipalities and mechanical and underground contractors. Watertap Inc. focuses on live taps, line stops, and valve insertions, along with bypass capabilities and turnkey excavation with installation services. With a large inventory of supplies on hand, Watertap Inc. can respond to any 24-hour emergency.

**Waterworks Systems**



Chuck Kronk  
PO Box 575  
Lakeland, MI 48143  
810-231-1200  
ckronk@Waterworkssystem.com  
www.waterworkssystem.com

Headworks screening, grit collection systems, clarifiers, anaerobic digestion systems, mixers, disc filters, disinfection systems, odor control systems, sludge pumping, flow and level control gates.

**Wolverine Power  
Xylem Dewatering Solution**

as of December 9, 2024

**WATERTAP**  
**INC.**  
*Pipeline Specialists*

**24 Hour Emergency Service**  
**Live Taps • Valve Insertions**  
**Line Stops • Bypass Capability**  
**PCCP Tapping Saddle & Transition Adapters**  
**Complete Inventory**

**248.437.7023 • watertapinc.com**  
48595 West Road • Wixom, MI 48393

# JOINT EXPO & OPERATOR DAYS EXHIBITORS

## NETWORKING MIXER SPONSORS

THANK YOU TO OUR NETWORKING MIXER SPONSORS!

as of December 9, 2024

### Commerce Controls Inc.



**Eric Hine**  
 41069 Vincenti Court  
 Novi, MI 48375  
 248-476-1442  
[ehine@commercecontrols.com](mailto:ehine@commercecontrols.com)  
[www.commercecontrols.com](http://www.commercecontrols.com)

Founded in 1977, Commerce Controls Inc. has earned a reputation for excellence as a 'Turn-Key Control Systems Integrator.' We provide services and solutions supporting various industries and applications throughout North America. Embracing technology, market strength, experience, quality and integrity, Commerce Controls is committed to delivering our clients industry-leading solutions at an exceptional value.

### EJ



**Joe Lazzati**  
 301 Spring Street, Unit C  
 East Jordan, MI 49727  
 800-626-4653  
[joe.lazzati@ejco.com](mailto:joe.lazzati@ejco.com)  
[www.ejco.com](http://www.ejco.com)

EJ is the leader in designing, manufacturing and distributing access solutions for water, sewer, drainage, telecommunications, and utility networks worldwide. Products include manhole frames and covers, hinged access assemblies, drainage grates, valve boxes, and related products. Made in the USA.

### Haviland USA



**Steven Buday**  
 421 Ann Street NW  
 Grand Rapids, MI 49504  
 800-456-1134  
[chemicalexperts@havilandusa.com](mailto:chemicalexperts@havilandusa.com)  
[www.havilandusa.com/products/wastewater-treatment](http://www.havilandusa.com/products/wastewater-treatment)

Proudly employee-owned and operated, Haviland Products Company delivers cost-effective, customizable chemical solutions to meet your water quality needs. Our dedicated technical team collaborates directly with customers, leveraging our expertise in specialty and commodity chemistry to ensure optimal performance and results.

### JGM Valve Corporation



**Joey Maruskin**  
 1155 Welch Road, Suite D  
 Commerce, MI 48390  
 248-926-6200  
[contact@jgmvalve.com](mailto:contact@jgmvalve.com)  
<https://jgmvalve.com>

Pumps, valves, actuators, blowers, belt filter press, centrifuge, and many other products.

### Michigan Pipe & Valve



**Luke Fleischmann**  
 5500 - 36th Street SE  
 Grand Rapids, MI 49512  
 616-805-3206  
[luke.fleischmann@michiganpipe.com](mailto:luke.fleischmann@michiganpipe.com)  
<https://michiganpipe.com>

### OHM Advisors



**Matt Parks**  
 34000 Plymouth Road  
 Livonia, MI 48150  
 734-522-6711  
[matt.parks@ohm-advisors.com](mailto:matt.parks@ohm-advisors.com)  
[www.ohm-advisors.com/expertise/water](http://www.ohm-advisors.com/expertise/water)

As a specialized group of professionals educated in engineering, science, and public planning with advanced modeling capabilities and full-service design and field services teams, we can guide our clients from analysis through construction for a wide range of water-related projects. For more than 60 years, we have helped communities and businesses manage their water and wastewater needs, protect their natural water resources and surrounding environments, and plan for the future. We're more than an architecture, engineering, and planning firm. We are a community advancement firm.

### Peerless-Midwest Inc.



**Frank Williams**  
 505 Apple Tree Drive  
 Ionia, MI 48846  
 616-527-0050  
[frank.williams@peerlessmidwest.com](mailto:frank.williams@peerlessmidwest.com)  
[www.peerlessmidwest.com](http://www.peerlessmidwest.com)

At Peerless Midwest, we provide comprehensive water supply services to municipalities and rural communities throughout Michigan. We are an employee-owned industry leader employing over 100 water supply and repair professionals in the Midwest.

### SAK Construction LLC



**Christa Cope**  
 864 Hoff Road  
 O'Fallon, MO 63366  
 636-385-1000  
[ccope@sakon.com](mailto:ccope@sakon.com)  
[www.sakon.com](http://www.sakon.com)

The right tools in the right hands — SAK delivers a depth of experience and a breadth of services to solve your most complex pipeline challenges. Whether renewing aging pipelines or expanding water and wastewater systems, we draw on the latest proven technologies to customize the right solution for your situation. Customers select SAK for our innovation and experience, then return time and time again because of our unmatched dependability.

### Tnemec Company



130 W 23rd Avenue  
 North Kansas City, MO 64116  
 816-483-3400  
[customerservice@tnemec.com](mailto:customerservice@tnemec.com)  
<https://tnemec.com>

Additional mixer sponsorships are still available

## THANK YOU

MTECH FOR SPONSORING THE 2025 JOINT EXPO AND OPERATOR DAYS LANYARD.





# The **REHABILITATION** of Battle Creek's Verona Wellfield

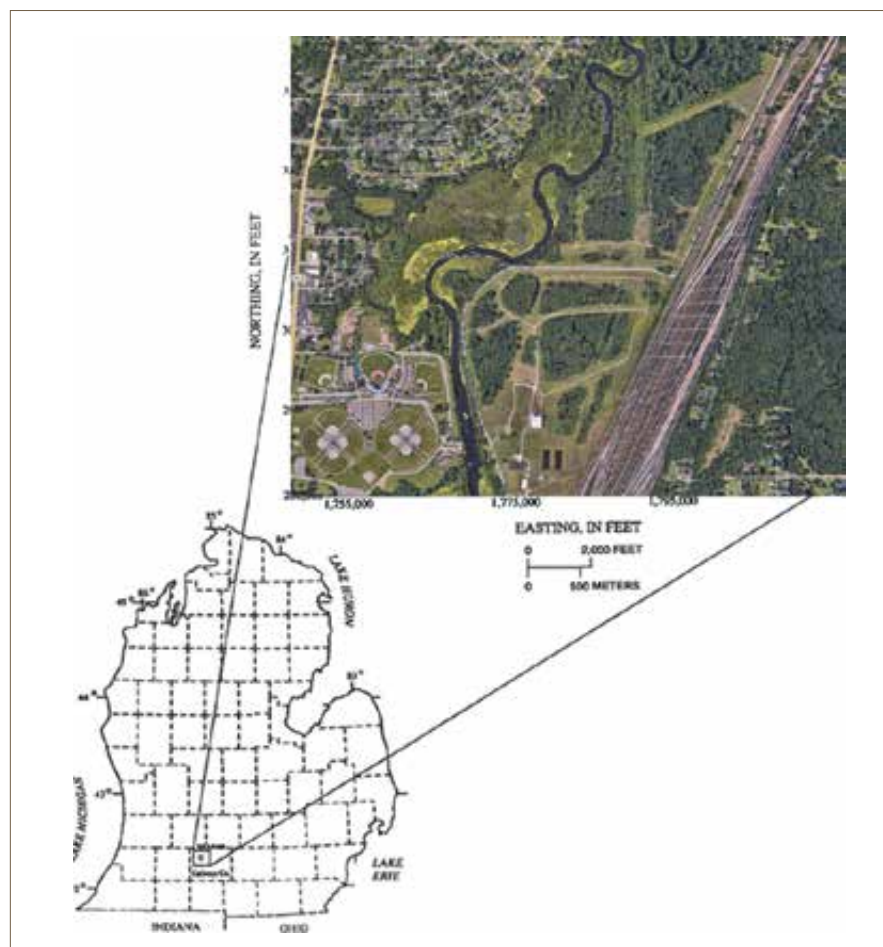
How a Hunch, Operator Experience, Investigation, & Regulatory Transparency Led to the Largest Wellfield Rehabilitation Project in State History

AARON J DAVENPORT, PE – JONES & HENRY ENGINEERS  
PERRY HART – CITY OF BATTLE CREEK

It was Wednesday and the world was an incredibly strange place. A couple of months earlier, the hair-brained and the very real had collided and conspired to change the world forever. COVID-19 had burst into the world a couple of months prior, and less than a month and a half earlier, the Governor had issued a Statewide Stay Home Order. On that Wednesday, May 6, 2020, the project team, which included the City of Battle Creek's Public Works team and their engineer, Jones & Henry, were meeting to put the finishing touches on their FY21 Drinking Water State Revolving Fund (DWSRF) Project Plan. The primary goal was figuring out how to meet the public hearing requirement while the entire state and most of the country was on lockdown.

You see, the project plan was complete – all that was left to do was finish the public portion and submit it for consideration. The City had gone to considerable expense to develop a project and a project plan that would add membrane treatment to its Radon, Iron, and Manganese Removal Facility (RIM Plant). The reason for this addition was to future-proof against contaminants both known and emerging. The idea was simple: add membranes so that if/when the day came that something showed up in the City's water, we were already prepared to treat it. The City was not dealing with some chronic MCL exceedance, but after a manganese exceedance that had shut down the system a couple of years prior, there was a deep commitment to proactive improvements and preparedness.

But one notion prevailed that day while meeting through video screens, masked and socially distanced. With the entire



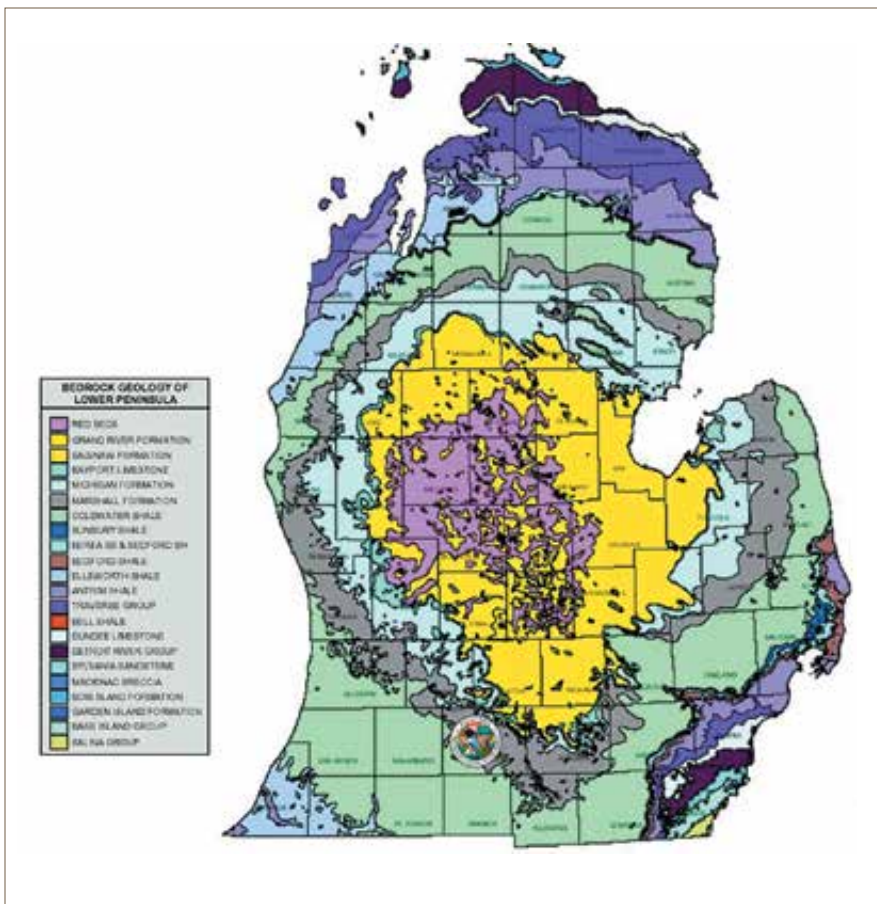
*The Verona Wellfield, located in the northeast corner of the City*

rate base sitting home wondering if they would still have a job tomorrow, was it the right time to propose a preemptive project that would likely increase water rates systemwide? The answer for the team was "no." The project would have to wait.

So, with a knee taken on the project, the team discussed how best to move forward. The City has always maintained an incredibly strong asset management

program, but if the treatment end were going to have to wait for the world to get to whatever the new version of 'normal' would be, a deeper dive into the source water would need to be taken, and with good reason.

You see, the City of Battle Creek pumps 100% of its drinking water from the Verona Wellfield in the Northeast corner of the City.



Geology of the Lower Peninsula

By early 1984, 27 of the 30 supply wells were determined to be contaminated with VOCs. Three primary areas were identified as the sources of the contamination: the Thomas Solvent Raymond Road (TSRR) area, the Thomas Solvent Annex (TSA), and the Grand Trunk Western Railroad (GTWRR) Facility. The TSRR area was used by the Thomas Solvent Company for solvent storage, transfer, and packaging from 1963 to 1984. This area was found to have the largest mass of contamination among the three source areas. Underground storage tank leakage and surface spills resulted in contamination of the soil and groundwater at the site.

The primary contaminants identified in the soil and groundwater included tetrachloroethene (PCE), trichloroethene, 1,1,1-trichloroethane, acetone, and toluene. A light, nonaqueous phase liquid layer was identified in the groundwater. The contamination in the unsaturated zone covered an area of approximately one acre, and the groundwater plume in the saturated zone covered an area of roughly one mile by one-half mile at the site.

To deal with this contamination plume, several of the City's original wells in the southern portion of the wellfield have been repurposed as blocking wells. These blocking wells pump groundwater continuously. Originally, contaminated groundwater was pumped to a treatment facility, but in recent years, lower detections have led EGLE to permit its release into the Battle Creek River. These wells function as a hydraulic curtain to keep the plume from reaching the City's production wells located to the north and west.

While the Thomas Solvent site is certainly the largest area of concern, it is not the only contamination site that the City must be mindful of. To the north of the Verona Wellfield sits the S&M Tire Fill site, which has experienced significant brine spills in the past. With disaster on all sides, the City is incredibly mindful of the condition of its source water. This is especially true as PFAS concerns near the Battle Creek airport led to the abandonment of its only reserve wellfield in recent years.

This wellfield has been the City's primary water supply for over a century and has a daily permitted pumping capacity of over 39 million gallons. It currently houses all 22 production wells, which are located in bedrock that is part of the Upper Marshall Sandstone aquifer.

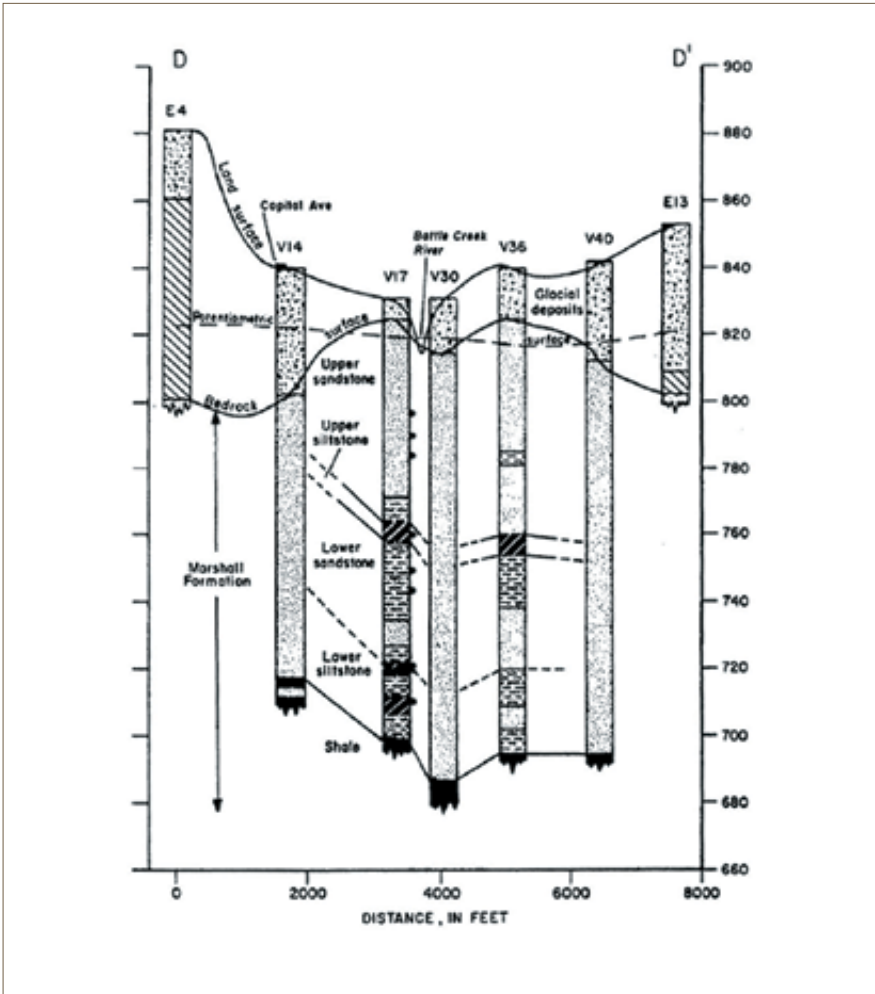
This prodigious water-bearing rock formation extends through a large section of southern Michigan. Water from this aquifer is generally very good, with typical groundwater contaminants like iron, manganese, and radon. All of these contaminants are effectively treated at the City's RIM Plant located

at the Verona Wellfield site and are no cause for concern.

But these weren't the reasons the City started looking to futureproof its treatment train. Battle Creek's wellfield is particularly susceptible to contamination due to an adjacent Superfund site. The Thomas Solvent site produced a large plume of groundwater contamination emanating from leaking underground tanks that were discovered in the 1980s.

Routine testing in August 1981 of the water supply indicated that 10 of the City's 30 wells contained detectable levels of volatile organic compounds (VOCs).

**“This wellfield has been the City’s primary water supply for over a century and has a daily permitted pumping capacity of over 39 million gallons. It currently houses all 22 production wells, which are located in bedrock that is part of the Upper Marshall Sandstone aquifer.”**



Cross section through the Verona Wellfield area, note the relationship to the Battle Creek River



violations at this time. Staff were simply seeing odd trends in their sampling, and with no project on the horizon, they felt compelled to ask themselves the tough questions.

The first group of well-televising videos was shocking. Every well that was inspected showed significant defects in the casings. These casing failures allowed water from the glacial drift to be drawn into wells that were supposed to pull water from the confined Marshall Sandstone Aquifer. This revelation led the City to immediately order the inspection and television of all 22 production wells.

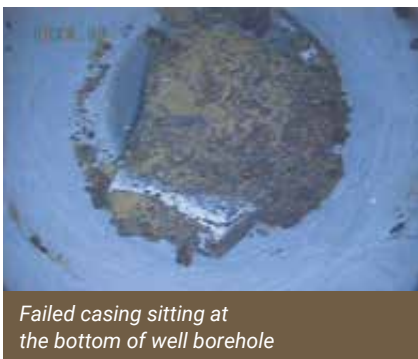
The television revealed defects and causes of concern in every well in the wellfield: failed and missing casing, vegetation present at depths up to and exceeding 100 feet, and clear currents of water coming through casing voids above the elevation of the Marshall Sandstone.

At that moment, the City knew they had potential for some big problems on the horizon. While they had not exceeded their permit, it did not matter; they raised their hand and asked the Michigan Department of Environment, Great Lakes, and Energy (EGLE) for help. EGLE responded as it had to by issuing

Further complicating matters has always been the wellfield's proximity to the Battle Creek River. Study after study has made it clear that while the wellfield may be under hydraulic influence, it is NOT biologically under the influence of surface water and has not been regulated as such. That said, seasonal temperature

swings in the groundwater reinforce the need for constant vigilance.

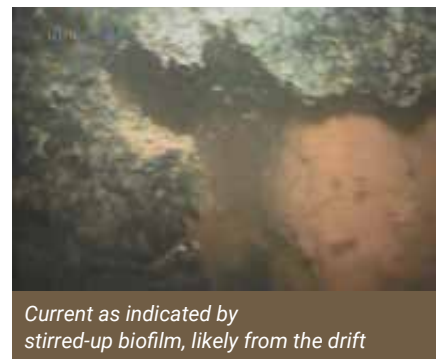
Based on the plant operator's concerns and evidence from routine well pump maintenance, the City decided it would be prudent to televise the wells. However, they had not exceeded their permit or had any complaints or



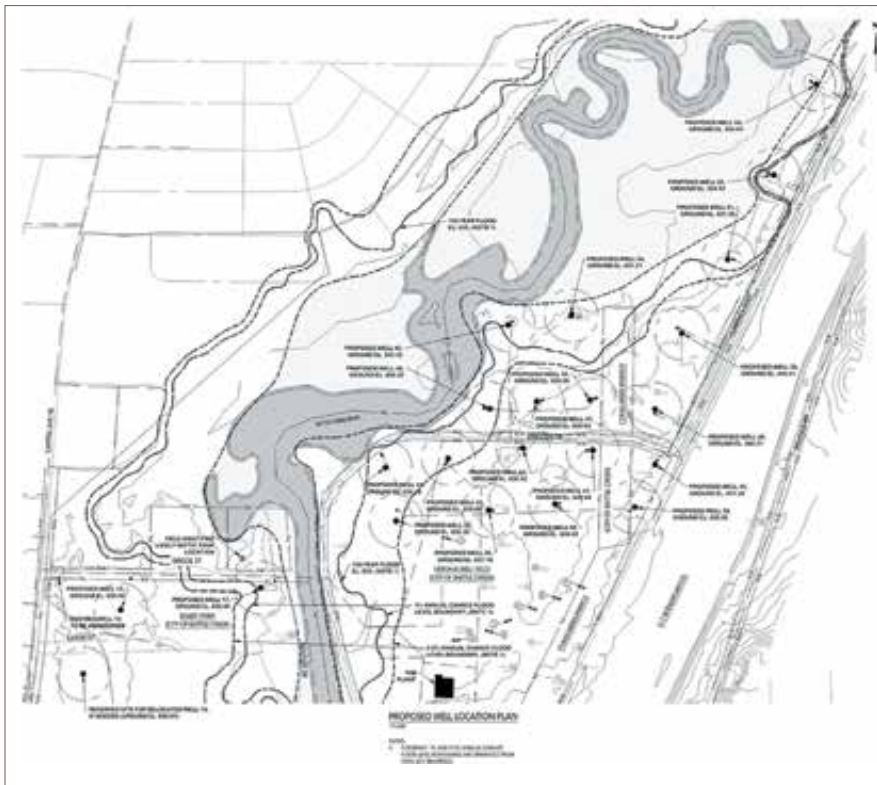
Failed casing sitting at the bottom of well borehole



Vegetation present 53 feet below the surface



Current as indicated by stirred-up biofilm, likely from the drift



*Proposed Offset Well Locations*



*Drilling in the glacial drift (above the bedrock)*

a Significant Violation Notice and giving the City 90 days to bring their wells into compliance. Obviously, that could not

happen, so the City and the state began to work on an Administrative Consent Order, which they signed in April 2023,

setting up a schedule for compliance that was aggressive but doable and, more importantly, necessary to protect the safety of the City's water system.

Work had already begun in April 2023 while the ACO was in hand. A project team began to take shape, and biweekly Wellfield Meetings were scheduled in partnership with the state. Jones & Henry assembled a team of experts, including Fleis & Vandenbrink Engineering, who had been involved with past projects and had extensive experience with the aquifers in this area.

The Superfund site also maintains a groundwater consultant as part of its responsibilities under a court order and a US EPA Consent Decree. This large group of interested parties began a year-long process to perform the necessary hydrogeological study and produce the necessary documentation to allow EGLE to approve the drilling of the test wells. The group, which includes over 30 invitees and regularly sees more than 15 people attend, has been meeting regularly since October 2022 to work through the problem and solutions.



*EGLE young staff touring the drilling operation*



*City of Battle Creek's Perry Hart with a chunk of the Upper Marshall Sandstone as a souvenir*



One of 22 new well sites (note the proximity to the existing well house)

So, now we know there is a problem, and we are working on how to tackle it, but how will we pay for it? Remember that old project plan that was put on pause in 2020? Yeah, it got dusted off and amended to put treatment on the back burner and bring to the forefront the well work, along with a significant number of lead service line replacements and wellfield power and control improvements. The project plan was submitted and ranked as fundable for FY2025.

On June 13, 2024, the City received bids for the replacement of 22 Type I community drinking water wells. Peerless Midwest was the low bidder. Together, the project team is driving forward with the completion of the **LARGEST WELLFIELD REHABILITATION PROJECT IN STATE HISTORY!** As of the printing of this article, we will likely have more than 18 of the test wells drilled, developed, and tested. Act 399 permit applications are being submitted to EGLE in blocks of four to five wells for each permit.

The new wells have casings that extend into the Marshall Sandstone to



Drilling the rock (air purge through the drill string brings cuttings and water up from below)

a depth of approximately 40 feet, well into competent bedrock. The total depth of the well is typically around 150 feet, ending in the shale that divides the Upper and Lower Marshall Sandstone. Aquifer testing has confirmed that this portion of the aquifer is a robust water producer, with testing showing significant water withdrawal and nearly insignificant drawdown across the field.

The project is expected to be completed on or before December 31, 2025. The project has been a model for interagency cooperation. With a complex group of stakeholders, the mission has been evident throughout, *protect the public at all costs.*

Scan the QR code to check out a YouTube short on the project! 💧





**KENNEDY**  
INDUSTRIES

PUMPING-REPAIR  
FLOW CONTROL  
PROCESS  
AUTOMATION

# INTEGRATED CHEM FEED SYSTEMS

## CLIENTS CHOOSE US!

When you choose a custom integrated Chemical Feed System, increased productivity and safety with reduced chemical costs is the result! Contact us today to design your solution.



**LOCAL SUPPORT**



**CUSTOM SOLUTIONS  
& DESIGN SUPPORT**



**COMPLETE SYSTEM  
INTEGRATION**



**PRE-WIRED &  
FULLY TESTED**



**FOCUS ON SAFETY  
& RELIABILITY**

environmental **EI<sup>2</sup>**  
improvements, inc.

**WATSON  
MARLOW** Fluid  
Technology  
Solutions

*Supply & integration  
of chemical feed systems  
using only equipment from  
top-tier manufacturers.*



Contact us to learn more –



PUMPING-REPAIR  
FLOW CONTROL  
PROCESS  
AUTOMATION

4925 Holtz Drive  
Wixom, MI 48393  
Phone: (248) 684-1200

[www.kennedyind.com](http://www.kennedyind.com)

7425 Clyde Park Avenue, Suite G  
Byron Center, MI 49315  
Phone: (616) 490-1023

# ETNA

## SUPPLY COMPANY

### SMART METERING SOLUTIONS FROM SENSUS

iPERL® Water Meters



ally® Water Meters



Stratus IQ™  
Electricity Meter

Aclara kV2c Gen 5  
Electricity Meter



FlexNet® Base Station

Cordonel® Ultrasonic  
C&I Water Meter



Advanced technology identifying more specifically than ever when, where, and why water and electricity is being used.



### MEET THE NEWEST LINE OF WASTEWATER PUMPS

#### Liberty's Engineered Product Line (LEP)



#### Wet Ends



Vortex



Enclosed 2 Vane



Monovane



Grinder V-Slice® Cutter Technology



19 Branches throughout Michigan 800-632-4576  
etnasupply.com



# WHAT EVERY OPERATOR MUST KNOW

## THE ART AND SCIENCE OF WATER PLANT OPERATIONS

Joel Martinez

**T**he water works landscape is changing rapidly, especially in the plant operations sector. Many operators are new to the field and learning about water treatment on the job. It is the job of supervisors and managers to help give the necessary tools to new operators so that they can be successful in their jobs, but the operator also needs to have a majority stake in deciding how much they will learn. A skilled operator is like an artist; the water plant is their media.

Water operators need to have a wide range of skills to be successful. Importantly, they need to be proficient in laboratory testing techniques. Operators are tasked with the collection of samples and the performance of analytical tests on them. These tests are the basic skills that an operator can learn from their coworkers. After analysis is completed by the operator it is usually their job to interpret the results and possibly make changes to the process of their plant. Every action an operator takes when making a change to the process flow has one or more reactions to the process.

A water plant can be like a snaking traffic jam. Things that happen in the headworks will carry through to the effluent, and what happens in the effluent can require changes to the headworks. One of the biggest things that can help make a new operator a great operator in the future is the understanding that



chemical feed changes and flow changes will affect more than one aspect of the water plant. At the beginning of their careers, I've seen many operators test something in the lab and make a necessary process change only to get flustered because that change caused other portions of the plant to change later on.

This is a major area where operators need to take charge of their own learning. Critical thinking and problem-solving can help operators learn from these situations and gain their greatest education.

An operator also needs to have good people skills to be good at their job. Many water plants run twenty-four hours per day. This means that operators need to work as a team to ensure that the plant is running optimally. Good communication of problems encountered and the corrective actions taken during an operator's shift are vital information to the next plant operator.

A water plant operator will learn how to do their job from supervisors and coworkers, but there is so much more to being a good operator than just being able to get numbers out of a lab. Like any skilled professional, there is an art to being an operator. An operator needs to use their critical thinking and problem-solving skills while learning their craft. Striving to become a great operator strengthens the team as a whole. The art of being an operator comes with time, and these artistic skills need to be shaped and honed by the operators themselves. 💧

**“ONE OF THE BIGGEST THINGS THAT CAN HELP MAKE A NEW OPERATOR A GREAT OPERATOR IN THE FUTURE IS THE UNDERSTANDING THAT CHEMICAL FEED CHANGES AND FLOW CHANGES WILL AFFECT MORE THAN ONE ASPECT OF THE WATER PLANT.”**

# Above the Bridge

## MI-AWWA UP Fall Water Conference Recap

The MI-AWWA UP Fall Water Conference, held on October 1-2, 2024, brought together water professionals in Michigan's Upper Peninsula for an enriching program packed with critical updates, technical sessions, and networking opportunities. Kicking off

with a breakfast meet-and-greet, attendees connected with vendors and industry experts, setting the stage for a full day of presentations and discussions.

The conference opened with regulatory insights from EGLE's Tom Flaminio, who covered state updates and the latest EPA

PFAS rule changes. Sessions explored essential topics for the water sector, including service lateral anatomy, the benefits of ductile iron pipe, innovative water access solutions, and chlorine use compliance. Afternoon highlights included a look back at the engineering marvels of ancient Rome's water distribution and a focused session on succession training to support workforce resilience.

The event wrapped up Wednesday with sessions on infrastructure preparedness, certification updates, and critical equipment maintenance tips. Exhibitors presented new solutions throughout the conference, and Tuesday's vendor reception provided a casual atmosphere for continued conversations. A raffle, door prizes, and giveaways added extra excitement.

The UP Fall Conference was a critical step toward strengthening communication among Michigan's water professionals, especially in more remote areas, and is part of an ongoing effort to expand access to training and education in the Upper Peninsula. MI-AWWA hopes to continue broadening its educational offerings here, with the goal of empowering every water professional to thrive and excel in their roles. Thank you to all attendees, vendors, and sponsors for making this conference successful! Join us for the next event on April 1-2, 2025, and let us know what you'd like to see on the agenda. Mark your calendars and register to attend! 💧

**EMERGENCY CHLORINE SHUTOFF SYSTEM**

Now With More Alarm Outputs -  
“Low Battery” & “Not Armed and Ready”

- ◆ Closes valve within seconds
- ◆ Fire code approved as alternative for scrubber in most states
- ◆ Compatible with all direct mount vacuum regulators
- ◆ No tools or adapters required for installation on valve

**HALOGEN VALVE SYSTEMS, INC.**  
www.halogenvalve.com

# BUILD AMERICA, BUY AMERICA.

Mueller's been building  
America for more than  
165 years.

Together with our customers, we've made and upgraded millions of miles of water infrastructure. Innovated to meet ever changing market demands. Found new ways for municipalities to drive operational efficiencies, improve service and make the most of capital expenditures.

Count on us to help meet your specifications and your schedule with our substantial **BABA-Compliant product portfolio** and a streamlined certification process.

Contact your Mueller representative  
to discuss your project, or scan to learn  
more and connect with us.



**MUELLER**

MUELLER® | ECHOLOGICS® | HYDRO GATE® | HYDRO-GUARD® | HYMAX® | i20® | JONES® | KRAUSZ® | MI.NET® | MILLIKEN®  
PRATT® | PRATT INDUSTRIAL® | SENTRYX® | SINGER® | U.S. PIPE VALVE & HYDRANT

Copyright © 2024 Mueller Water Products, Inc. All Rights Reserved. The trademarks, logos and service marks displayed in this document herein are the property of Mueller Water Products, Inc., its affiliates or other third parties.





## CALL FOR ABSTRACTS AND PRESENTATION IDEAS

# MI-ACE 2025

The Michigan Section of AWWA is now seeking abstracts and presentation ideas for MI-ACE 2025.

Are you working on an interesting or challenging project? Have you found a way to solve a problem that you think others could benefit from? Did you just save your community money with a chance you've made? The Annual Program Planning Committee is now accepting abstracts and would love to hear from you.

**Topic ideas include:**

- Asset management
- Customer service
- Distribution practices
- Financial planning and rate setting
- Information technology
- Management issues
- Operations and maintenance
- Pump and valve maintenance
- Research
- Safety procedures
- Source water or wellhead protection
- Stormwater management
- Water quality and sampling methods
- Water treatment processes
- Workforce development
- Or your own fresh idea

Please visit the Section's Annual Conference webpage to submit your abstract or presentation idea. For more information, visit [www.mi-water.org/mi-ace](http://www.mi-water.org/mi-ace).

**MARK YOUR CALENDAR**

MI-ACE 2025 • September 9-12, 2025  
Blue Water Convention Center • Port Huron, Michigan

# Seamless All-In-One Solutions



**fishbeck** fishbeck.com | info@fishbeck.com

Together  
we deliver

**Brown AND  
Caldwell**

Engineers | Scientists | Consultants | Constructors  
100% Environmental | Employee Owned | BrownandCaldwell.com

# Count on it. Build on it.

Address your most critical needs. Count on Neptune's knowledge and experience. Build on a solution tailored for water and for you.



neptunetg.com

# RADAR IS THE BETTER ULTRASONIC



**\$795**

VEGAPULS C 11

**80 GHz level sensor with  
fixed cable connection (IP68)**

- Accuracy and reliability  
meet affordability
- Easy Bluetooth setup via the  
VEGA Tools app for smart devices
- Optional remote display available

All advantages of the radar technology:

**[www.vega.com/vegapuls](http://www.vega.com/vegapuls)**

## 2024 BEST TASTING WATER IN MICHIGAN

While the competition was hard, the water was not. A full slate of Regional Champions brought their finest Hs and O to show off at the Amway Grand. The City of Ann Arbor, Mancelona Area Water and Sewer Authority, Plainfield Charter Township, and Negaunee Township brought a mason jar of locally produced source to tap, drinking H-2-O, determined to prove that they have the best. They all survived, advanced out of their Regional Competitions in the Spring, and arrived in Grand Rapids with dreams of being the Best in The Great Lakes State. Who would prevail? What System would be crowned 2024's *Best Tasting Water in Michigan*? Time would only tell.

An unremitting panel of judges brought to bear their judicious palates. It is hard to imagine a more fluid competition. Judges poured over the details of aroma, appearance, and taste. Ultimately, one round of samples was all it would take to determine the champion.

For the second year in a row, the best-tasting water in Michigan can be found north of the bridge in Negaunee Township! They will represent the Section well at AWWA ACE in Denver, Colorado, in June 2025. Congratulations to the artisans who pour themselves into every single drop of **2024's Best Tasting Water in Michigan, Negaunee Township!**

I am already looking forward to our 2025 competition, so plan to bring your mason jars to your Spring Regional meeting. 





# READY TO LEAD?

## Nominations Open for the Michigan Section Board of Trustees

**Nominations are due by March 28, 2025.**

The Nominating Committee is seeking candidates for terms beginning in September 2025 (in conjunction with the Annual Business Meeting) for the following positions:

**Trustee:** Two each for a three-year term.

**Chair-Elect:** Three-year term (one as Chair-Elect, one as Chair, and one as Past Chair).

Self and peer nominations are both encouraged. Please also note that the bylaws of the Section indicate that we should strive to have the following:

- At least one Board member from the Upper Peninsula of Michigan; and
- At least one Board member either from the area of the Lower Peninsula north of Town Line Fifteen or from any district, area, or community in the Lower Peninsula maintaining water service to a population under 10,000 persons at the most recent Federal Census.

The representation of the Board of Directors members is intended to reflect the diverse membership of the Section, including, but not limited to, geographical locations, membership categories, utility size, gender, and ethnic origins.

Any member in good standing of the Section, including a multi-section member, is eligible to hold elective office in the Section.

Interested members are encouraged to contact Nominations Committee Chair Christine Spitzley at [info@mi-water.org](mailto:info@mi-water.org).



**Tt TETRA TECH**

## Clean, Safe Water for a Complex World

Tetra Tech provides innovative, sustainable solutions for every phase of the water cycle, from source water protection to wastewater reuse.

<b>Ann Arbor</b> 734.665.6000	<b>Brighton</b> 810.220.2112
<b>Detroit</b> 313.961.7799	<b>Lansing</b> 313.498.3330

tetrattech.com

# COMPLETE TURN-KEY LIQUID STORAGE SOLUTIONS

DESIGN • BUILD • INSPECT

**BLUEWATER**

**BWTANKS.COM | (248) 351-9773**

## DRINKING WATER DISINFECTION

### Capital Controls® UV Featuring Sentinel® Reactor

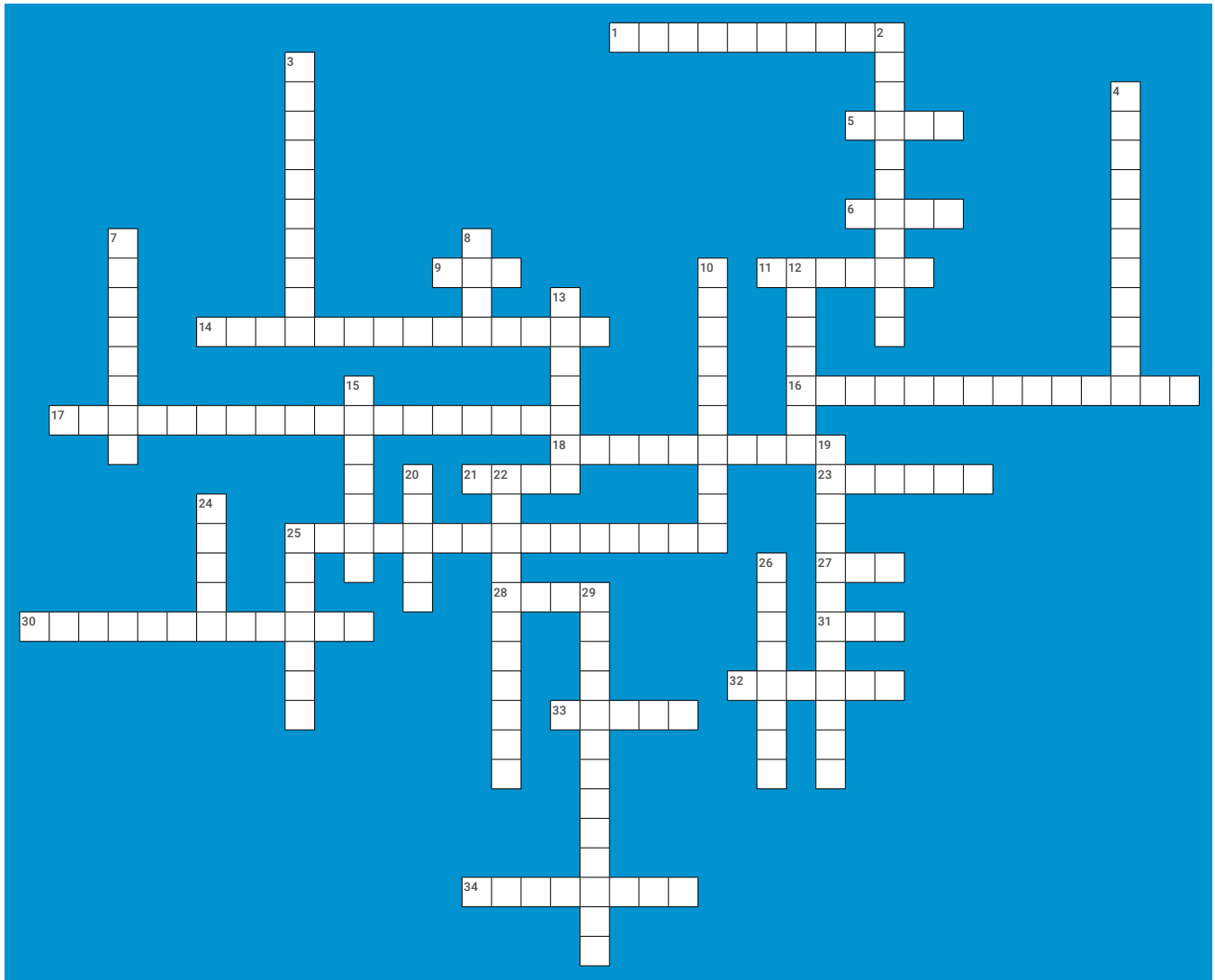
- Trusted supplier
- Compact design
- More uptime

represented by  
**Waterworks Systems & Equipment, Inc.**

Learn more at  
[www.waterworkssystem.com](http://www.waterworkssystem.com)

DE NORA

## CROSSWORD: ALL ABOUT WATER FLUORIDATION



### ACROSS

1. Common household item that also contains fluoride for topical use.
5. Economic advantage often attributed to water fluoridation.
6. Type of water that may not be fluoridated and might need individual treatment.
9. US agency that recognizes fluoridation as a public health achievement.
11. Hard, protective outer layer of teeth that fluoride strengthens.
14. Process where fluoride helps harden and strengthen tooth enamel.
16. Water treatment method that can remove fluoride from drinking water (2 words).
17. Common fluoride acid compound used in water fluoridation.
18. Term for the process of controlling fluoride concentration in water.
21. Area of health significantly improved by water fluoridation.
23. Type of policy that guides water fluoridation.
25. When fluoride levels exceed safe limits, potentially causing health issues.
27. US agency that sets the maximum allowable fluoride level in drinking water.
28. Area of health studied in relation to fluoride intake.
30. Process of adding fluoride to water supplies.
31. The active component of fluoride in drinking water.
32. Primary goal of water fluoridation programs.
33. Classification for fluoride's concentration in drinking water.
34. Dental issue that fluoride helps prevent.

### DOWN

2. Strong support for water fluoridation from health organizations.
3. Term for fluoridation as it aims to prevent dental issues.
4. First city in the world to fluoridate its public water supply (2 words).
7. Mineral commonly added to drinking water to prevent tooth decay.
8. US law under which fluoride levels are regulated.
10. Type of health intervention that fluoridation represents.
12. Term for fluoride that exists in some water sources without added treatment.
13. Type of fluoride applied directly to teeth through toothpaste or treatments.
15. Often does not contain fluoride unless specifically indicated.
19. Field studying the effects of fluoridated water on populations.
20. Major dental issue reduced by fluoride in drinking water.
22. Analysis type often used in public health policy on water fluoridation (2 words).
24. Important life stage where fluoride is particularly beneficial for dental health.
25. Term for maintaining fluoride levels that benefit teeth without causing fluorosis.
26. Type of fluoride ingested through water that benefits developing teeth.
29. Field concerned with the impacts of chemicals like fluoride in water.



ENGINEERING STRONGER COMMUNITIES

800.482.2864  
www.wadetrिम.com



**GIANT**  
MAINTENANCE & RESTORATION, INC.  
**WE PAINT FIRE HYDRANTS**

BEFORE  
PREPARATION

DURING  
PREPARATION

PREPPED FOR  
PAINTING

COMPLETION  
OF PAINT

For more information contact:  
**Mark Giarrante**  
847-566-9188 | mark@giant2u.com  
**WWW.GIANT2U.COM**

SCAN ME

**TAPLIN GROUP HAS A PROVEN TRACK RECORD WITH COMPLEX, MULTI-FACETED PROJECTS NATIONWIDE**



**TAPLIN GROUP** brings a wealth of industry knowledge and experience to every project to get the job done in a safe, professional manner. We provide comprehensive environmental contracting services and have extensive experience working with municipalities and underground infrastructures. An abbreviated list of services offered includes:

- CCTV Mainline Closed Circuit TV Investigation - 6<sup>th</sup> through 200<sup>th</sup>
- Panoramo<sup>®</sup>- HD Technology
- Panoramo<sup>®</sup>Manhole Inspection
- Laser Profiling / LIDAR
- Full GIS Integration with Multiple Software Platforms
- Sonar and MSI Capabilities
- Sewer and Pipe Cleaning
- Large Diameter Cleaning Capabilities
- Sewer Testing
- Emergency Response
- GIS Technicians on Staff

Contact: **DAVE BALOGH** - Executive Vice President  
davebalogh@taplingroup.com | m: 313-695-1047  
**www.taplingroup.com**





## EDUCATION AND TRAINING COUNCIL (ETC) UPDATE

The Education and Training Council (ETC) is committed to developing exciting educational events for Michigan water works professionals. The ETC Committees organize the Lab Practices Seminar, Source Water Protection Conference, Field Day, Regional Seminars, Maintenance Seminar, and the Borchardt Conference. These shorter-time commitment events are an excellent way for water professionals to earn CECs while staying current with new technologies and changing regulations. 💧



## GOVERNMENT AFFAIRS COUNCIL

The current administration has tried to address several challenges in the water industry, particularly about infrastructure modernization and updating regulatory frameworks to maintain water safety. One area of focus has been emerging contaminants, such as per- and polyfluoroalkyl substances (PFAS), with new drinking water standards set for certain PFAS compounds. Additionally, updates to the *Lead and Copper Rule* have set a deadline for removing lead drinking water pipes by 2027. Efforts to incorporate environmental justice considerations have also been part of

these initiatives, with the aim of ensuring equitable access to clean water for all communities.

However, some of these regulatory measures could be subject to changes under future administrations. Proposals to revisit regulations such as the *Waters of the United States Rule* (WOTUS), the *Clean Water Act Section 401 State Certification Rule*, and the designation of PFAS as hazardous substances have been discussed. Shifts in funding priorities or a move toward market-based solutions could also influence the direction of water policy.

Throughout these changes, organizations like the American Water Works Association (AWWA) have played a consistent role in supporting the water industry. Founded in 1881, AWWA has adapted to political and regulatory changes across multiple administrations and continues to serve as a professional resource for water utilities, emphasizing public health, safety, and environmental stewardship. Regardless of political shifts, the need for a collaborative, bipartisan approach to managing the nation's water resources remains a central concern. 💧

## MEMBERSHIP COUNCIL

The 2024 AWWA Section Membership Challenge ended on July 31, 2024. The Michigan section achieved its 3% growth goal and had the most improved recruitment (among similarly sized Sections). This is an outstanding achievement, and in recognition of it, the Association will present the Michigan Section with a check for \$1,900 at the 2025 Membership Summit

in Denver, CO, in January. Thank you to everyone who helped recruit and retain our members.

As of September 1, 2024, the Section has 2,283 active members and is the sixth-largest Section in AWWA. The committees under the Membership Council aim to host events applicable to everyone, and we hope you, as a member, find value in those activities.

As always, more volunteers are needed to further our mission of being the foremost association for water professionals. If you feel the desire to become more involved, please feel free to reach out to Jonelle Moore at [jonelle@mi-water.org](mailto:jonelle@mi-water.org) from Section Staff or me (Frank Williams) at [frank.williams@peerlessmidwest.com](mailto:frank.williams@peerlessmidwest.com), and we will be sure to get you plugged in. 💧



## LABORATORY PRACTICES COMMITTEE

As we approach the end of the year, the Laboratory Practices Committee is excited to share some important updates with our community.

Our biggest news regards the annual Laboratory Practices Seminar, which is scheduled for its usual time in mid-November. Last year's seminar was a tremendous success, with over 100 attendees participating in a day filled with insightful presentations and valuable networking opportunities. This year, we are aiming even higher and hope to see an even larger turnout. The seminar features a range of topics tailored to laboratory safety, testing, and techniques, all presented by experts in the field. We encourage lab professionals to attend each year and take advantage of the opportunity to enhance their knowledge and connect with peers.

**"LAST YEAR'S SEMINAR WAS A TREMENDOUS SUCCESS, WITH OVER 100 ATTENDEES PARTICIPATING IN A DAY FILLED WITH INSIGHTFUL PRESENTATIONS AND VALUABLE NETWORKING OPPORTUNITIES."**

In addition to our annual seminar, the LPC continues to serve as a resource for troubleshooting laboratory and procedure-related questions. Our members are happy to provide support to ensure that all laboratory operations across the state

run smoothly. Whether you are facing a specific challenge or simply need advice on best practices, we are here to help.

We look forward to seeing you at the seminar and continuing to support your laboratory needs throughout the year. 💧



### Simplicity at its finest.

With the fewest parts in the industry, the WaterMaster® fire hydrant is known for its reliability and ease of maintenance.

Learn more at [ejco.com/hydrant](http://ejco.com/hydrant) or call 800 626 4653  
Made in the USA



# Lift Station Control Panels



- ✓ Any Size
- ✓ Any Type
- ✓ Any Qty.

We can build to your prints or help you design the best custom panel at the best price!

- ✓ In-house Design Engineering
- ✓ In-house Custom Laser Engraving

**SEPTIC PANELS USA™** (325) 388-6023  
[septicpanelsusa.com](http://septicpanelsusa.com)



## Engineering Clean Water

means providing our clients with innovative and practical solutions to all of their water resource needs.



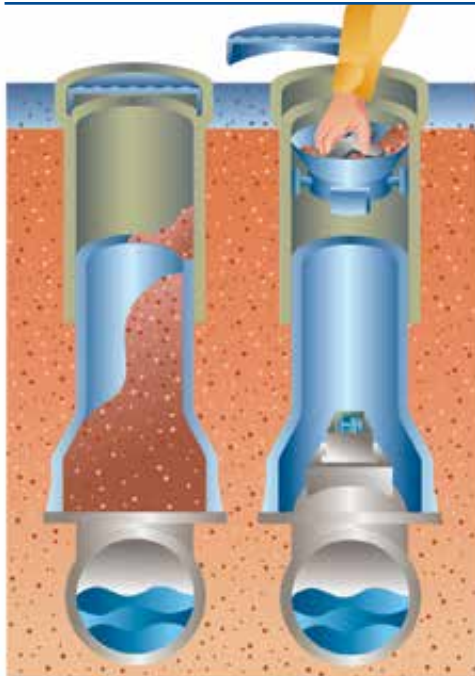
**Moore + Bruggink**  
 Consulting Engineers

Brian Hannon, P.E.    [bhannon@mbce.com](mailto:bhannon@mbce.com)  
 616.363.9801        [mbce.com](http://mbce.com)



Introducing

# The Debris Cap™



The Debris Cap™ is a simple, cost effective solution to keeping water valves, pipes, and risers free of dirt and debris allowing un-restricted access to valve shut-off for utility workers in a safe and timely manner. SW Services' products were designed to save municipalities, utility companies and emergency response crews thousands of dollars as well as crew hours to ensure the reduction of liability, insurance and maintenance costs. In addition, the Debris Cap™ is also applicable for emergency crew's rapid response to line breaks where a valve may not be easily located or buried and may significantly increase the time it takes to repair the line break. The Debris Cap™ is OSHA "Lock-Out/Tag-Out" compliant which maximizes the health and safety of employees. The lockout/tagout option also prevents unauthorized access/operation of valves. The Debris Cap™ is made of injection-molded plastic and premium elastomeric rubber materials in order to ensure long service life.



22223 NORTH 16th STREET PHOENIX, ARIZONA 85024  
[www.debriscaps.com](http://www.debriscaps.com) 1-800-462-2773

# MEET THE 2024-2025 LEADERS



## 2024-2025 BOARD OF TRUSTEES



**Chair**  
Rick Solle,  
*City of Plainfield*



**Chair-Elect**  
Molly Maciejewski,  
*City of Ann Arbor*



**Past Chair**  
Gary Wozniak,  
*Lansing Board of  
Water and Light*



**Association Director**  
Christine Spitzley,  
*OHM Advisors*



**Secretary-Treasurer**  
Jaime Fleming,  
*City of Wyoming*



**Trustee**  
LaShone Bedford,  
*Great Lakes  
Water Authority*



**Trustee**  
James Cassel,  
*EJ*



**Trustee**  
Alando Chappell,  
*City of East Lansing*



**Trustee**  
Angie Goodman,  
*Lansing Board of  
Water and Light*



**Trustee**  
Doug Scott,  
*ROWE Professional  
Services Company*



**Trustee**  
Dan Sroka,  
*Trace Analytical  
Laboratory*

## 2024-2025 COUNCIL LEADERSHIP

### Communications

Samarhia Giffel, Chair –  
*Grand Rapids Water Department*

Matthew Lane, Vice-Chair –  
*Great Lakes Water Authority*

### Conference & Recognition

Adam DeYoung, Chair –  
*Brown and Caldwell*

Thomas Smith, Vice-Chair –  
*Prein&Newhof*

### Education & Training

Joel Martinez, Chair –  
*East Lansing-Meridian  
Water and Sewer Authority*

### Government Affairs

Sara Rubino, Chair –  
*Oakland County Water  
Resources Commissioner*

John Willemin, Co-Vice-Chair –  
*Fishbeck*

Wayne Jernberg, Co-Vice-Chair –  
*Grand Rapids Water Department*

### Membership

Frank Williams, Chair –  
*Peerless-Midwest, Inc.*

Zachary Hampton, Vice-Chair –  
*OHM Advisors*



## BEST TASTING WATER COMPETITION

### GREATNESS IS JUST A MASON JAR

**AWAY!** For years, you have been saying that you make the best water in the Great Lakes State! Well, it's time to prove it. The Best Tasting Water Regional 2025 Competition will be held at the Michigan Section Spring Regional Meetings. Winners of the four Regions (Livonia, Grand Rapids, Gaylord, and the Upper Peninsula) will compete for Best Tasting Water in Michigan at the MI-AWWA Annual Conference and Exhibits in Port Huron (September 2025). The Winner of the State Competition will represent the Section at AWWA ACE 2026 in Washington, DC.

Competing is super easy. Grab a quart mason jar, fill it with water from the distribution system (the plant tap is a wonderful place to grab your entry), and bring the unrefrigerated water to the registration/check-in desk at your Regional



Meeting. A group of independent judges will score your entry against the other entrants, and the regional winner will be announced that day. It is as easy as that!

So, let's get those mason jars ready and prepare to show off your best tap water. You can't win if you don't play! See you at your Spring Regional. 💧

## ***CUSTOMIZABLE SOLUTIONS with Minimal Service Interruptions***

***Manhole Coatings • Wet Wells & Tank Linings  
Potable Water Storage Basins • Culvert Lining Installations  
Bridge Deck Waterproofing • Secondary Containment***

***CONTACT US TODAY  
TO LEARN MORE.***

**Advanced  
Rehabilitation  
Technology**

**419-636-2684**

**Advanced Rehabilitation Technology  
525 Winzeler Drive, Unit 1  
Bryan, OH 43506**

**[www.artcoatingtech.com](http://www.artcoatingtech.com)**

***Certified Installer of*** 



# WELCOME NEW MEMBERS

Members who joined from  
September 1, 2024, to November 30, 2024.

**David Agnew**, CEC Controls

**Amy Aris**, Applied EcoSystems

**Emma Beyer**

**Andrew Biela**, City of Warren Water Department

**Christopher Bradshaw**, Taplin Group LLC

**Rick Burgess**, HydroCorp

**D.C. Coulier**, Peerless-Midwest Inc.

**Nicole Dyer**, Prein&Newhof

**Travis Ellens**, Holland Board of Public Works

**Norman Fenton**, Village of Kingsley

**Nick Gard**, City of St. Joseph

**Zachrey Gogulski**, Fishbeck

**Samantha Harris**, Detroit Water & Sewerage Department

**Bindu Kallumkal**, Ypsilanti Community Utilities Authority

**James Koeman**, Holland Board of Public Works

**Avie Krauss**, City of St. Joseph

**Alfred Maddix**, Highland Treatment Co. Inc.

**Suzan C.M. Martin**, City of South Lyon

**Tyrone McCloud**, Beecher Metropolitan Water District

**Cecilia Mende**, Baker Tilly Municipal Advisors LLC

**Patrick Morris**, Ypsilanti Community Utilities Authority

**Jananan Muththalagan**, Metro Consulting Associates

**Jesse Nelson**, Baker Tilly Municipal Advisors LLC

**Jonathan Nelson**, Prein&Newhof

**Chad Nyberg**, Marquette Township

**Joshua Offringa**, Michigan Pipe & Valve

**Almon Ogletree**, Detroit Water & Sewerage Department

**Thelma Ogletree**, Detroit Water & Sewerage Department

**John Pearson**, Pearson Drilling Company

**Emily Perrin**, Moore & Bruggink Inc.

**Jeremy Prendergast**, HydroCorp

**Julie Rasco**, HydroCorp

**Ty Shindeldecker**, City of St. Joseph

**Chris Spain**, HydroCorp

**Devin Swift**, City of Jackson

**Aleksandra Szczuka**, University of Michigan

**Carson Vanveelen**, Williams & Works

**Tai Verbrugge**, Grand Rapids Water Department

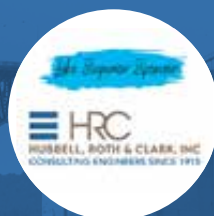
**Pierce Vreeland**, Peerless-Midwest Inc.

**Andrew Walerski**, Wolverine State Plumbing

**Maggie Williams**

**Bari Wrubel**, City of Marysville 

## MI-AWWA Annual Sponsors



# REVISED TOTAL COLIFORM RULE

## REVIEW OF LEVEL 1 AND LEVEL 2 ASSESSMENT REQUIREMENTS

The Revised Total Coliform Rule (RTCR) became effective on April 1, 2016. An acute maximum contaminant level (MCL) for *E. coli* exists under the revised rule; however, there is no longer an MCL for total coliform (TC). If TC is verified through repeat monitoring, an assessment must be conducted, and any sanitary defects identified and corrected. There are two levels of assessments based on the severity or frequency of the problem; however, both are designed to ‘find and fix’ conditions that might indicate a pathway for contamination of the drinking water.

A **level 1 assessment** may be completed by the water supply’s certified operator in charge (OIC) or the owner. A level 1 assessment is triggered if any of the following occur:

- Two (2) or more routine and repeat samples in a month are TC-positive in a supply that collects less than 40 samples per month.
- Greater than 5% of routine and repeat samples in a month are TC-positive in a supply that collects 40 or more samples per month.
- Failure to collect ALL repeat samples following a TC-positive routine sample.

Note: Repeat and triggered source samples must be collected within 24 hours of being notified of a routine positive result.

For community water supplies, a **level 2 assessment** must be conducted by Michigan Department of Environment, Great Lakes, and Energy (EGLE) staff with a representative of the water supply present. A level 2



assessment is triggered if any of the following occur:

- An *E. coli* MCL violation.
- A second level 1 trigger within a rolling 12-month period.
- EGLE determines a level 2 assessment is appropriate.

Level 1 and 2 assessments must be conducted as soon as possible but no later than 30 days after the triggering event. If sanitary defects are identified during an assessment, the water supply must correct the defect(s)

within 30 days of the assessment trigger. Failure to complete and submit an assessment by the deadline is a treatment technique violation, requiring Tier 2 public notification within 30 days.

### Example Level 1 Assessment

A groundwater system with two wells is required to collect one TC compliance sample each month. The OIC collects the routine sample as required. The following day, they received a TC-positive result. Within 24 hours and according to the Sample Siting Plan (SSP), the OIC collects three repeat samples and two triggered groundwater source samples. The routine and downstream repeat sample locations are TC-positive; the upstream repeat and triggered well samples are TC-negative. This is the supply’s first positive bacteriological event in 12 months.

**“THERE ARE TWO LEVELS OF ASSESSMENTS BASED ON THE SEVERITY OR FREQUENCY OF THE PROBLEM; HOWEVER, BOTH ARE DESIGNED TO ‘FIND AND FIX’ CONDITIONS THAT MIGHT INDICATE A PATHWAY FOR CONTAMINATION OF THE DRINKING WATER.”**



## “MANY SCENARIOS TRIGGER LEVEL 1 OR 2 ASSESSMENTS, AND CORRECTIVE ACTIONS ARE SITUATION-SPECIFIC. AFTER RECEIVING POSITIVE RESULTS, IT IS RECOMMENDED THAT YOU CALL EGLE TO ENSURE PROPER ACTION IS TAKEN AND TO ASSESS WHETHER A BOIL WATER ADVISORY SHOULD BE DISTRIBUTED.”

Because the supply had more than one TC-positive sample during the monitoring period, a level 1 assessment is triggered. The OIC has 30 days to complete both the level 1 assessment and any corrective actions. The sooner the level 1 assessment is conducted, the more time will remain for any defects to be corrected.

Using the level 1 assessment form available on EGLE's website, the OIC conducts the assessment immediately upon receiving the repeat positive result. While reviewing all items on the assessment form, the OIC notices a missing casing vent screen on one well. Additionally, after a discussion with the owner, the OIC learned the system was depressurized earlier in the month for the replacement of backflow preventers.

Corrective actions:

- Due to the system-wide pressure loss, a boil water advisory (BWA) is distributed;
- The distribution system is thoroughly flushed;
- Efforts are made to install temporary chlorination if flushing does not resolve the issue;
- The casing vent screen is replaced;
- A plan is established to ensure property management informs the OIC when maintenance activities are being performed on the water system;
- After two consecutive rounds of TC-negative samples, the BWA is rescinded.

### Example Level 2 Assessment

A city on groundwater collects 50 compliance samples per month from designated sample stations. One routine sample result is *E. coli* positive. As required, the OIC immediately calls EGLE to report the *E. coli* result and collects repeat and triggered source samples. One of the repeat samples is TC-positive/EC-negative; all other repeat and triggered well samples are TC-negative. This *E. coli* MCL violation requires Tier 1 public notification and

triggers a level 2 assessment. After informing the EGLE, the OIC placed the city on a BWA that included the required Tier 1 public notice language. An EGLE representative meets with the OIC the following day to conduct the level 2 assessment.


During the assessment, a crack was found in the protective casing of the sampling station where the EC-positive sample was collected. Bird droppings around the cracked casing were also observed. Free chlorine residuals were lower than normal. No other issues were identified.

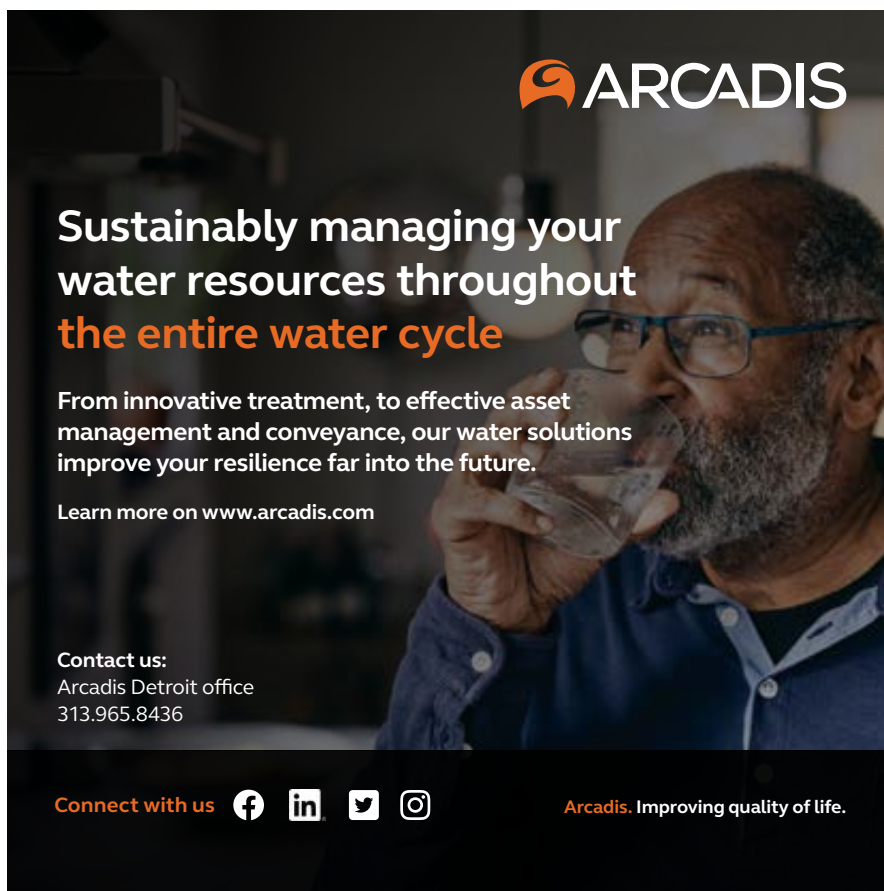
Corrective actions:

- A BWA and Tier 1 public notice is distributed;
- Chlorine is increased to bring residuals back to normal levels;
- The sample station casing is replaced;

- Thorough flushing is performed;
- After two consecutive rounds of TC-negative samples, the BWA is rescinded, and the city returns to compliance from the MCL violation.

Many scenarios trigger level 1 or 2 assessments, and corrective actions are situation-specific. After receiving positive results, it is recommended that you call EGLE to ensure proper action is taken and to assess whether a boil water advisory should be distributed.

Additional resources and guidance, including the Level 1 Assessment form, can be found by visiting [www.michigan.gov/communitywater](http://www.michigan.gov/communitywater) and selecting the 'Revised Total Coliform Rule' link under 'Laws and Rules.' 







**ARCADIS**

**Sustainably managing your water resources throughout the entire water cycle**

From innovative treatment, to effective asset management and conveyance, our water solutions improve your resilience far into the future.

Learn more on [www.arcadis.com](http://www.arcadis.com)

**Contact us:**  
Arcadis Detroit office  
313.965.8436

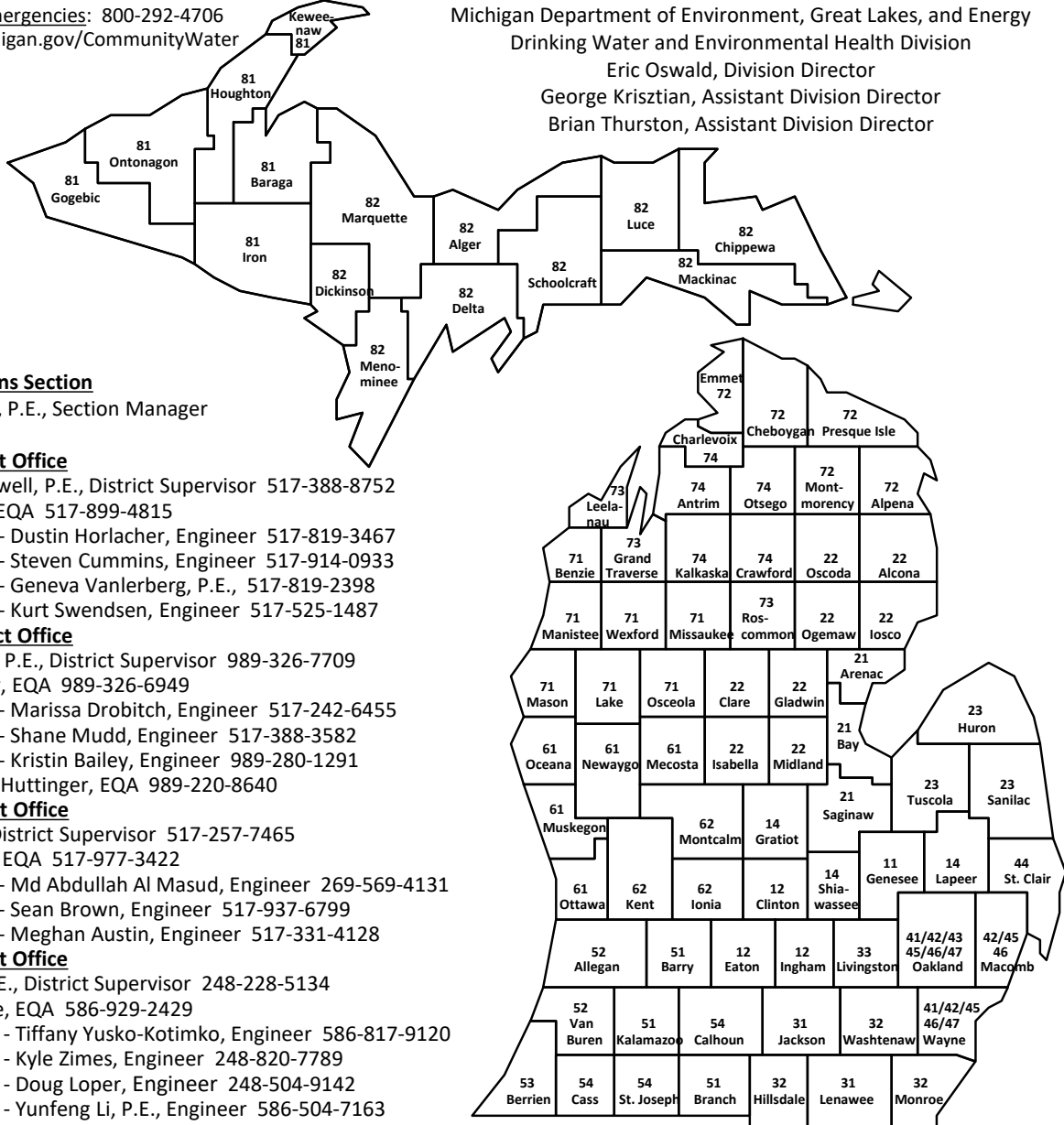
Connect with us    

Arcadis. Improving quality of life.

## Community Water Supply Program

Michigan Department of Environment, Great Lakes, and Energy  
 Drinking Water and Environmental Health Division  
 Eric Oswald, Division Director  
 George Krisztian, Assistant Division Director  
 Brian Thurston, Assistant Division Director

After Hours Emergencies: 800-292-4706  
 Website: [Michigan.gov/CommunityWater](http://Michigan.gov/CommunityWater)



### Field Operations Section

Brandon Onan, P.E., Section Manager

### Lansing District Office

Thomas McDowell, P.E., District Supervisor 517-388-8752  
 Justina Lyons, EQA 517-899-4815

- District 11 - Dustin Horlacher, Engineer 517-819-3467
- District 12 - Steven Cummins, Engineer 517-914-0933
- District 13 - Geneva Vanlerberg, P.E., 517-819-2398
- District 14 - Kurt Swendsen, Engineer 517-525-1487

### Bay City District Office

Joseph Reinke, P.E., District Supervisor 989-326-7709  
 Rebecca Kaiser, EQA 989-326-6949

- District 21 - Marissa Drobitch, Engineer 517-242-6455
- District 22 - Shane Mudd, Engineer 517-388-3582
- District 23 - Kristin Bailey, Engineer 989-280-1291
- MHC - Sue Huttering, EQA 989-220-8640

### Jackson District Office

Taryn Simon, District Supervisor 517-257-7465  
 Beverly Soave, EQA 517-977-3422

- District 31 - Md Abdullah Al Masud, Engineer 269-569-4131
- District 32 - Sean Brown, Engineer 517-937-6799
- District 33 - Meghan Austin, Engineer 517-331-4128

### Warren District Office

Vicki Garon, P.E., District Supervisor 248-228-5134  
 Sabrina Fouche, EQA 586-929-2429

- District 41 - Tiffany Yusko-Kotimko, Engineer 586-817-9120
- District 42 - Kyle Zimes, Engineer 248-820-7789
- District 43 - Doug Loper, Engineer 248-504-9142
- District 44 - Yunfeng Li, P.E., Engineer 586-504-7163
- District 45 - Shamsul Fahim, Engineer 586-206-0234
- District 46 - Devany Bosetti, Engineer 586-588-6062
- District 47 - Zeba Rahman, Engineer 586-765-5089
- MHC - Darrell Strong-Staples, EQA 586-636-2483

### Kalamazoo District Office

Heather Bishop, District Supervisor 269-330-9153  
 Stacy Wilson, EQA 269-491-3107

- District 51 - Nathan Yutzy, P.E., Engineer 517-388-9125
- District 52 - Chunyan He, Engineer 269-569-1655
- District 53 - Kory Kowalski, Engineer 269-998-3165
- District 54 - Katelyn Reyes, P.E., Engineer 269-216-1691
- MHC - Mark Kraenzlein, EQA 269-491-8693

### Grand Rapids District Office

Vacant, District Supervisor  
 Jeremy Klein, EQA 616-250-1053

- Stephanie Alvara, P.E., Engineer 616-893-1594
- District 61 - John Sidwell, Engineer 616-290-6383
- District 62 - Justina Carver, Engineer 616-745-2982
- MHC - Brian Esparsa, EQA 616-307-0006

### Cadillac District Office

Amy Vail, District Supervisor 231-878-8972  
 Zach Prause, EQA 231-942-1069

- District 71 - Kevin Lemmer, P.E., Engineer 517-614-8632
- District 72 - Bob Weir, Engineer 231-590-2050
- District 73 - Jamie Wade, P.E., Engineer 231-878-8592
- District 74 - Taylor Quillan, Engineer 231-878-1279

### Marquette District Office

Tom Flaminio, P.E., District Supervisor 906-236-9746  
 Lori Schultz, EQA 906-869-6624

- District 81 - Mike Westra, P.E., Engineer 906-869-8823
- District 82 - Amy Douville, Engineer 906-236-4277

MHC = Manufactured Housing Communities EQA = Environmental Quality Analyst

# FERGUSON WATERWORKS

**Flushing**  
810-230-2737

**Kalamazoo**  
269-383-1200

**Kentwood**  
616-803-7521

**Lansing**  
517-322-0300

**Warren**  
586-459-4491

**WWW.FERGUSON.COM**



YOUR HELPING HAND IN ALL YOUR MUNICIPAL WATER & WASTEWATER NEEDS

**OUR MISSION:**  
Ensuring customer satisfaction within the Water and Waste Water Treatment Industry. We provide customers with outstanding technical application assistance and support.

**PROUDLY SERVING TERRITORIES OF:** Michigan, Ohio, Indiana & Kentucky

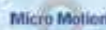


**CONTACT:**

Curtis Brzycki  
cbrzycki@mmi.com  
517-250-3063



James L. Hommers  
jmhommers@mmi.com  
517-250-1050



Dave Marszalec  
davemarszalec@mmi.com  
269-832-8134



**CALL US TO SOLVE YOUR INSTRUMENTATION NEEDS**  
517-764-4736



www.midwestmunicipalinc.com

## shat·r·shield lighting inc.

### Incoplas® LED Hybrid™

Class 1 Div 2 (A,B,C,D)

Class 2 Div 2 (F,G)

Class 3, Div 1 & 2

30 - 95 Watts

5,450 - 16,000 Lumens

For lighting consultation, please contact  
North Central Regional Sales Manager,  
Craig Fisher at [cfisher@shatrshield.com](mailto:cfisher@shatrshield.com)  
or 812-803-0717.





# TRAINING CALENDAR

## FEBRUARY 2025

SUNDAY	MONDAY	TUESDAY	WEDNESDAY	THURSDAY	FRIDAY	SATURDAY
26	27	28	29	30	31	1
2	3	4 Career Roundtable – Lansing, MI	5 Joint Expo and Operator Days – Lansing, MI	6	7	8
9	10	11	12 Basic Chemistry for Water and Wastewater Operators Joint event with MWEA – Lansing, MI	13	14	15
16	17	18	19	20	21	22
23	24	25	26	27 Lab School for Water Operators – Holland, MI	28	1

## MARCH 2025

SUNDAY	MONDAY	TUESDAY	WEDNESDAY	THURSDAY	FRIDAY	SATURDAY
23	24	25	26	27	28	1 March, TBD – Exam Prep Roundtable
2	3	4	5 Principles of Water Department Finance – Lansing, MI	6	7	8
9	10	11	12	13	14	15
16	17	18	19	20	21	22
23/30	24/31	25	26	27	28	29

## APRIL 2025

SUNDAY	MONDAY	TUESDAY	WEDNESDAY	THURSDAY	FRIDAY	SATURDAY
30	31	1 UP Spring Water Conference – Harris, MI	2	3	4	5
6	7	8	9	10	11	12
13	14	15	16	17	18	19
20	21	22 Spring Regional Water Seminar – Gaylord, MI	23 Spring Regional Water Seminar – Lansing, MI	24 Spring Regional Water Seminar – Livonia, MI	25	26
27	28	29	30 Michigan Field Day – Mason, MI	1	2	3

### ANNOUNCING SPRING 2025 REGIONAL TRAINING SEMINARS

MI-AWWA is excited to host the Spring 2025 Regional Water Seminars at three convenient locations across Michigan. Join us for essential training, updates, and networking opportunities!

- **Tuesday, April 22, 2025** – Kirtland University Center, **Gaylord**
- **Wednesday, April 23, 2025** – Lansing Community College – West, **Lansing (NEW CENTRAL LOCATION)**
- **Thursday, April 24, 2025** – Schoolcraft College, **Livonia**

Attendees will earn **0.5 CECs**, with **lunch included**. Bring a water sample to participate in the **Regional Best Tasting Water Contest**, where the winner advances to compete at MI-ACE in Port Huron.

Register now to secure your spot!

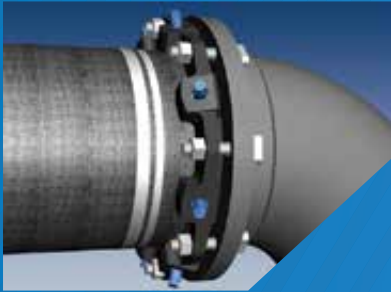
Visit [www.mi-water.org/events](http://www.mi-water.org/events) to view all upcoming trainings.



Leaders in Pipe Joint Technology for the Water and Wastewater Industry

Represented in Michigan by:

**MBA DISTRIBUTING**  
**THE WATER ASSOCIATES**



**MEGALUG®**  
**Series 1100**  
Mechanical Joint  
Restraint for DIP



**MEGALUG®**  
**Series 2000PV**  
Mechanical Joint  
Restraint for PVC



**MEGAFLANGE®**  
**Series 2100**  
Restrained Flange Adapter  
for DIP and PVC



**FLEX-TEND®**  
**Force Balanced**  
**Series 4400**  
Flexible Expansion Joint



**MEGA-COUPLING®**  
**Series 3800**  
Restrained Coupling



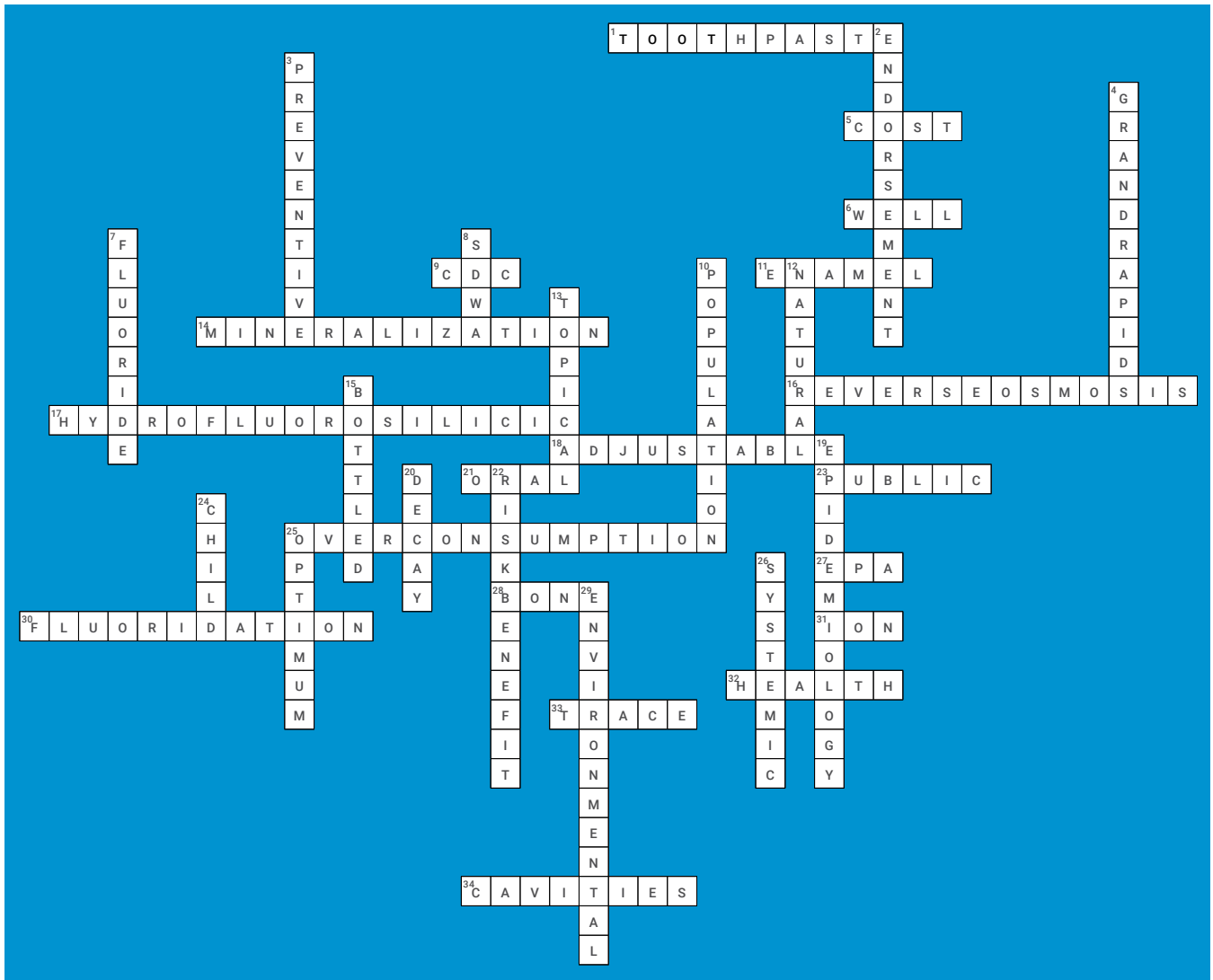
**Restraint Harness**  
**Series 1900**  
Restrained Harness for  
PVC Pipe Bell and Spigots

Go to [ebaa.com](http://ebaa.com) for more information.

MADE IN THE U.S.A.



# CROSSWORD SOLUTION







What happens **NEXT** is happening **NOW**.™

Let's shape your **NOW** together.

cdmsmith.com/NEXTisNOW

**CDM Smith**®

**FLEIS & VANDENBRINK**  
DESIGN. BUILD. OPERATE.

www.fveng.com

WATER & WASTEWATER ENGINEERING

**HRC**

**HUBBELL, ROTH & CLARK, INC**  
248.454.6300 | HRCENGR.COM

**Jacobs**

Challenging today.  
Reinventing tomorrow.

30800 Telegraph Road Suite 4900  
Bingham Farms, Michigan 48025  
248.633.1438

Follow us @JacobsConnects | jacobs.com

**Prein & Newhof**  
Civil Engineering | Drinking Water Testing

pncleanwater.com  
616.364.8491

**williams&works**  
engineers | surveyors | planners

Water Supply, Treatment,  
and Distribution Services

www.williams-works.com (616) 224-1500

MICHIGAN **water works** NEWS

To reach Michigan's water industry professionals through *Michigan Water Works News* and its targeted readership, contact Al at your earliest convenience to discuss your company's promotional plans.

**Al Whalen | Marketing Manager | 866-985-9782 | [awhalen@kelman.ca](mailto:awhalen@kelman.ca)**



*Michigan Water Works News* is made possible by the companies below who convey their important messages on our pages. We thank them for their support of the MI-AWWA and its publication and encourage you to contact them when making your purchasing decisions. To make it easier to contact these companies, we have included the page number of their advertisement, their phone number, and, where applicable, their website.

COMPANY	PAGE	TELEPHONE	WEBSITE
Advanced Rehabilitation Technology	48	419-636-2684	www.artcoatingtech.com
AECOM	9	248-204-5900	www.aecom.com
Arcadis	51	248-994-2240	www.arcadis.com
Bluewater Engineered Storage Systems	41	248-351-9773	www.bwtanks.com
Brown & Caldwell	37	248-680-6708	www.browncaldwell.com
CDM Smith	57	313-963-1313	www.cdmsmith.com
Commerce Controls, Inc.	59	248-476-1442	www.commercecontrols.com
Core & Main	4	586-323-8800	www.coreandmain.com
Dixon Engineering	10	616-374-3221	www.dixonengineering.net
EJ	45	800-626-4653	www.ejco.com
ETNA Supply Company	32	800-632-4576	www.etnasupply.com
Ferguson Waterworks	53	616-803-7521	www.ferguson.com/waterworks
Fishbeck	37	800-456-3824	www.fishbeck.com
Fleis & Vandenbrink	57	616-977-1000	www.fveng.com
Force Flow/Halogen Valve Systems	34	925-686-6700	www.forceflowscales.com
Giant Maintenance & Restoration, Inc.	43	847-566-9188	www.giant2u.com
Haviland	13	616-514-3600	www.havilandusa.com
Hawkins Water Treatment	9	877-355-7876	www.hawkinsinc.com/groups/water-treatment
Hubbell, Roth & Clark, Inc.	57	248-454-6300	www.hrc-engr.com
Induron Coatings	8	502-655-7397	www.induron.com
Jacobs	57	614-888-3100	www.jacobs.com
JGM Valve	2	248-926-6200	www.jgmvalve.com
Jones & Henry Engineers	14	269-353-9650	www.jheng.com
Kennedy Industries	30-31	248-684-1200	www.kennedyind.com
Kraft Power	13	866-713-2152	www.kraftpower.com
Michigan Pipe & Valve	16	989-817-4331	www.michiganpipe.com
Midwest Municipal Instrumentation, Inc.	53	517-764-4736	www.midwestmunicipalinc.com
Moore & Bruggink, Inc.	46	616-363-9801	www.mbce.com
Mueller Co.	35	705-719-9965	www.muellercompany.com
Neptune Technology	37	281-794-3133	www.neptunetg.com
Peerless Midwest	3	616-527-0050	www.peerlessmidwest.com
Pittsburg Tank & Tower	12	270-826-9000	www.pttg.com
Plummers Environmental, Inc.	6	616-877-3930	www.plummersenv.com
Prein&Newhof	57	616-364-8491	www.preinnewhof.com
SAK	60	651-263-0498	www.sakcompanies.com
Septic Panels USA	46	325-388-6023	www.septicpanelsusa.com
Shat R Sheild Lighting, Inc.	53	812-803-0717	cfisher@shatrshield.com
SLC Meter, LLC	15	800-433-4332	www.slcmeter.com
SW Services	46	800-462-2773	www.debriscaps.com
Taplin Group, LLC	43	269-375-9595	www.taplingroup.com
Tetra Tech	41	734-665-6000	www.tetrattech.com
The Water Associates	55	517-787-9016	www.mbadist.com
TruGrit Traction, Inc.	9	407-900-1091	www.trugrittraction.com
UIS Scada	11	734-424-1200	www.uisscada.com
VEGA Americas, Inc.	38	513-272-0131	www.vega.com
Wade Trim	43	800-482-2864	www.wadetrim.com
Watertap, Inc.	23	248-437-7023	www.watertapinc.com
Waterworks Systems & Equipment, Inc.	41	810-231-1200	www.waterworkssystem.com
Williams & Works	57	800-224-1590	www.williams-works.com



COMMERCE CONTROLS

# WE'VE GOT IT UNDER CONTROL.

## WATER INFRASTRUCTURE CONTROL SOLUTIONS

### I DESIGN

- Project Management
- In-House Design & Engineering
- Documentation & Training

### I BUILD

- PLC, HMI & SCADA Programming
- Network Configuration & Security
- Control Panel Fabrication & Assembly

### I INTEGRATE

- Field Calibration
- On-site Commissioning
- Field Service
- Field Installation





# REAL PEOPLE. REAL SOLUTIONS.

Meet our Michigan Team



Learn More About SAK

## PIPELINE INFRASTRUCTURE. SOLVED.™

Deteriorating infrastructure. Diminishing resources. We've seen it all. And solved it time and again for communities and companies from coast to coast.

As one of the nation's most respected pipeline rehabilitation contractors, SAK Construction brings proven experience and innovation to every project.

Contact SAK today for more information about our pipeline solutions!



CURED-IN-PLACE PIPE



GEOPOLYMER



SPIRAL WOUND PVC



SLIPLINING

sakcompanies.com



651.263.0498